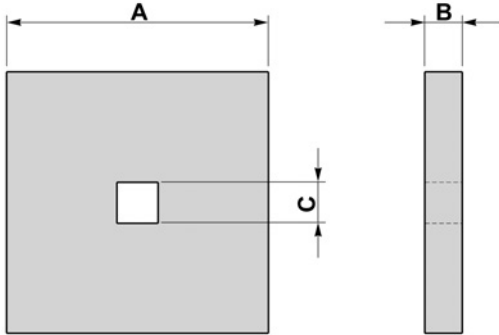


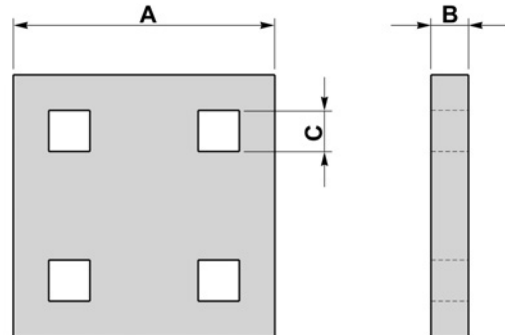
WASHER PLATES

TYPE A TO TYPE D ARE DESIGNED TO BE USED WITH SQ SQ HOLDING DOWN BOLTS TO BS 7419

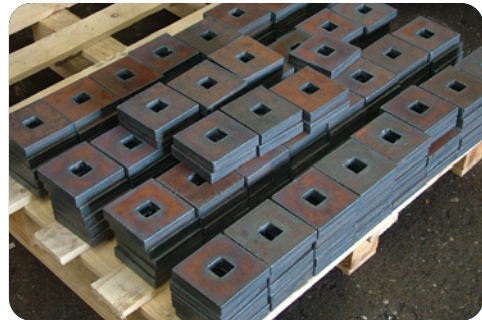
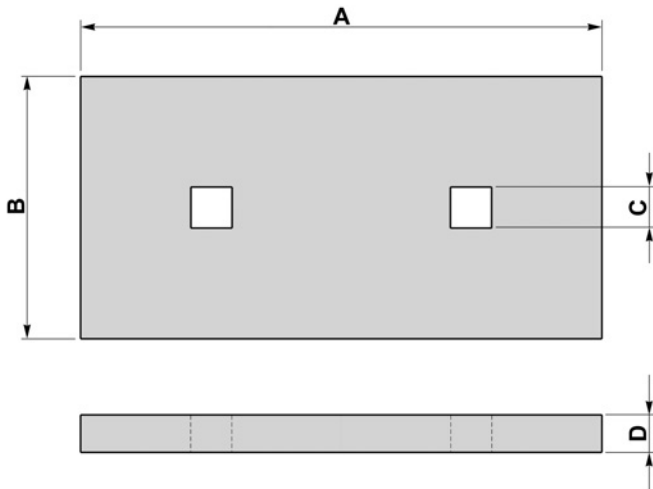
TYPE A



TYPE B



TYPE C



**PLATES AVAILABLE WITH
ROUND OR SQUARE HOLES
& LOCKING CAP IF
REQUIRED FOR USE WITH
HEXAGON BOLTS**

TYPE D

