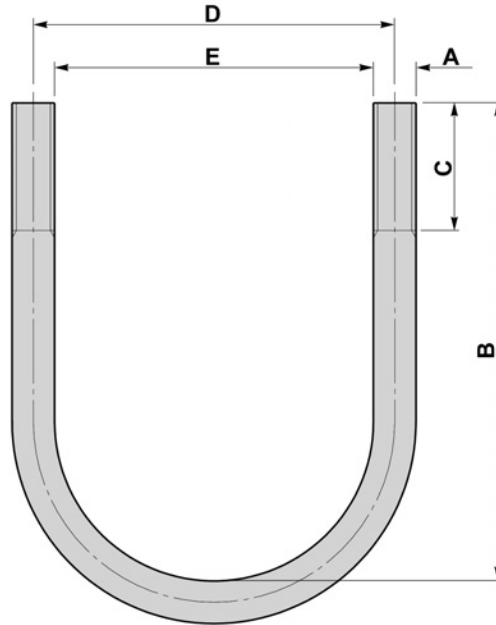


BS 3974 - U BOLTS - NON GRIP TYPE

- TO BS 3974 : PART I



| Nom Pipe Size | Pipe O.D | A | B | C | D | E |
|---------------|----------|-----|-----|----|-----|-----|
| mm | mm | mm | mm | mm | mm | mm |
| 15 | 21.3 | M8 | 41 | 25 | 40 | 32 |
| 20 | 26.9 | M8 | 51 | 30 | 45 | 37 |
| 25 | 33.7 | M8 | 56 | 30 | 50 | 42 |
| 32 | 42.4 | M8 | 66 | 30 | 60 | 52 |
| 40 | 48.3 | M10 | 80 | 40 | 65 | 55 |
| 50 | 60.3 | M10 | 95 | 40 | 80 | 70 |
| 65 | 76.1 | M12 | 114 | 50 | 95 | 83 |
| 80 | 88.9 | M16 | 132 | 55 | 110 | 94 |
| 100 | 114.3 | M16 | 157 | 55 | 140 | 124 |
| 125 | 139.7 | M16 | 182 | 55 | 165 | 149 |
| 150 | 168.3 | M20 | 215 | 65 | 195 | 175 |
| 175 | 193.7 | M20 | 240 | 65 | 220 | 200 |
| 200 | 219.1 | M20 | 265 | 65 | 250 | 230 |
| 225 | 244.5 | M20 | 290 | 65 | 275 | 255 |
| 250 | 273.0 | M20 | 325 | 75 | 305 | 285 |
| 300 | 323.9 | M20 | 375 | 75 | 355 | 335 |
| 350 | 355.6 | M24 | 413 | 80 | 390 | 366 |
| 400 | 406.4 | M24 | 463 | 80 | 440 | 416 |
| 450 | 457.0 | M24 | 513 | 80 | 495 | 471 |
| 500 | 508.0 | M24 | 563 | 80 | 545 | 521 |
| 550 | 559.0 | M24 | 613 | 80 | 595 | 571 |
| 600 | 610.0 | M24 | 663 | 80 | 645 | 621 |

MATERIAL

CARBON STEELS
STAINLESS STEELS
ALLOY STEELS
B7, 4.6, 5.6, 8.8

FINISH

SELF COLOUR
GALVANISED
ELECTROPLATED
SHERARDISED
PTFE COATING

**NON STANDARDS MADE
TO SUIT CUSTOMER
REQUIREMENTS
M6 - M100**