



# **BROOKS** forgings **SKIP COMPONENTS**

## CONTENTS

### HEAVY DUTY ROLLER TRACK



**NEW**

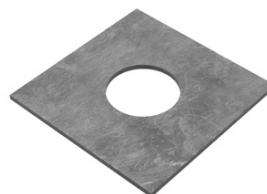
PAGE | **01**

### SKIP LUGS



PAGE | **02**

### LUG MOUNT PLATE



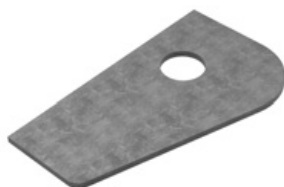
PAGE | **02**

### CURVED BARS



PAGE | **03**

### CHEEK PLATES FOR CURVED BARS



PAGE | **04**

### SKIP HINGES



PAGES | **05-07**

### STEEL ROLLERS



PAGE | **08**

### POLY ROLLER



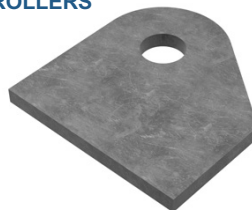
PAGE | **08**

### ROLLER SHAFTS



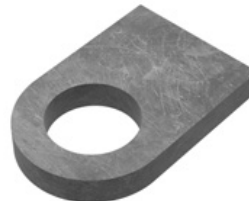
PAGE | **09**

### MOUNTING PLATES FOR ROLLERS



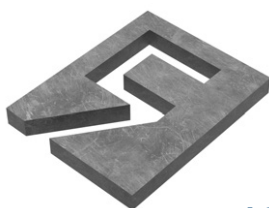
PAGE | **10**

### MISC PLATE PROFILES



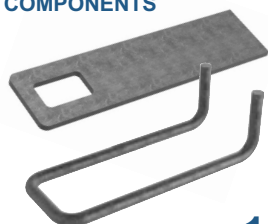
PAGE | **11-14**

### LABYRINTH PLATES



PAGE | **13**

### DOOR LOCK COMPONENTS



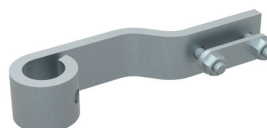
PAGE | **14**

### RATCHET BINDERS



PAGE | **15**

### EUROBIN ACCESSORIES



PAGE | **16**

## Our Product Range

Our extensive range of products is designed to service the requirements of the skip and roll on roll off refurbisher or manufacturer.

The range is always in development and expanding, and we are happy to work with companies to manufacture or source hard to find components.

**If you require a component that isn't shown please do contact us.**

**We are happy to assist..**

Please Call Us Today With Your Requirements  
**+44 (0)1384 563356**

**BROOKS** forgings  
 SKIP COMPONENT CATALOGUE

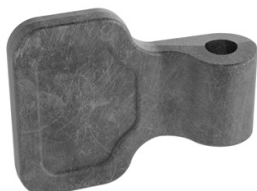
## CONTENTS

### STRAP HINGES



PAGE | **17**

### SPADE HINGES



PAGE | **17**

### PINS



PAGE | **17**

### SPRING LOADED BOLTS



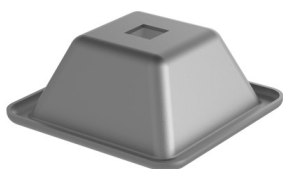
PAGE | **18**

### RAMP FASTENERS



PAGE | **18**

### PALLET FEET



PAGE | **18**

### LOCKING PINS



PAGE | **19**

### LOCKING BAR



PAGE | **19**

### SPRING LOCK & CHAIN



PAGES | **19**

### CHAIN



PAGES | **19**

### FASTENING LUGS



PAGE | **19**

### TAILBOARD LUG



PAGE | **20**

### FASTENING PINS



PAGE | **20**

### FORKETS



PAGE | **20**

### ROPE HOOKS



PAGE | **21**

### LASHING RING & STAPLE SET



PAGE | **21**

### LASHING RING



PAGE | **21**

### CABLE LIFT ITEMS



PAGE | **22**

### TUBULAR RIGGING SCREWS



PAGE | **23**

CONTENTS

All content is subject to copyright © 2021

## HEAVY DUTY ROLLER TRACK

**PART REF: BFD6827**

**MATERIAL: MILD STEEL**

**2280MM OVERALL LENGTH**

**455MM OVERALL WIDTH**

**188MM OVERALL HEIGHT**

**NEW**



**The ideal solution for  
moving heavy skips or  
stillages around your yard!**

**Manufactured to order.  
Supplied in pairs.**

The new heavy duty roller track from Brooks Forgings is manufactured in the UK using industry proven components from our extensive range.

Each track uses:  
**7 - BFD4544 ROLLERS**  
**7 - BFD5712 SHAFTS**

Fully galvanised exterior mounting frame.  
Fully serviceable when parts get worn or damaged.

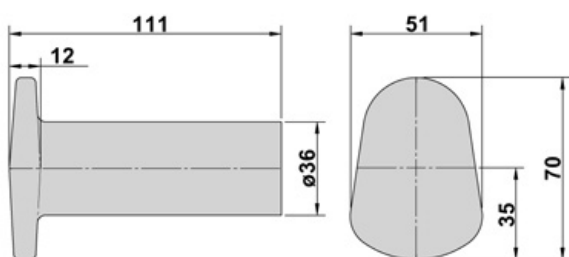




## SKIP LUGS

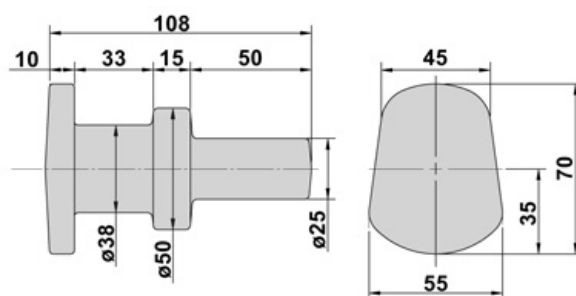
All dimensions in millimetres unless otherwise stated.

**PART REF: BFD1187**

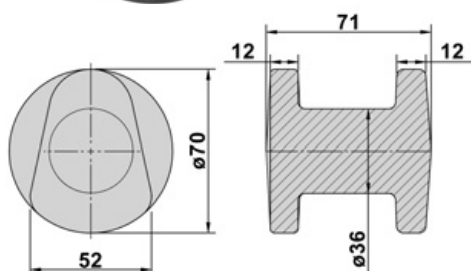


**OTHER LENGTHS AVAILABLE**

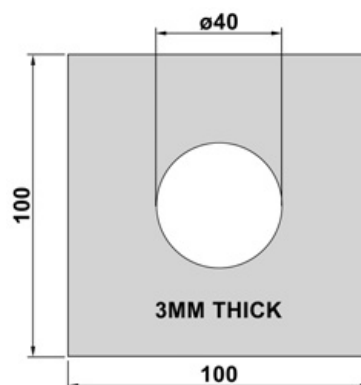
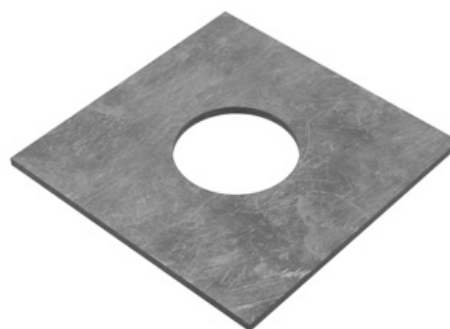
**PART REF: BFD2658**



**PART REF: BFD5045**

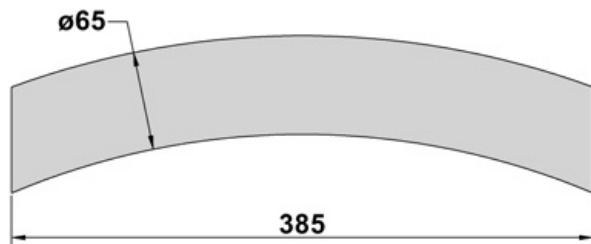


**PART REF: BFD7340**

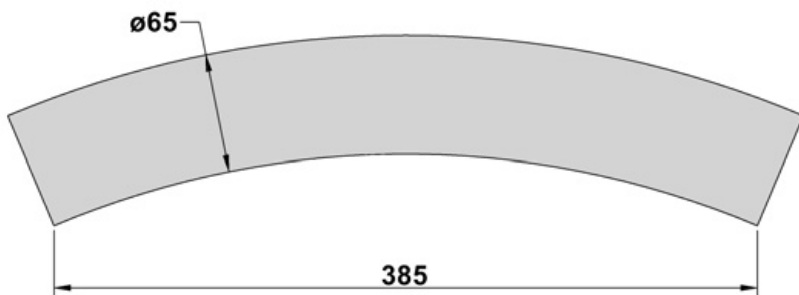


## CURVED BARS

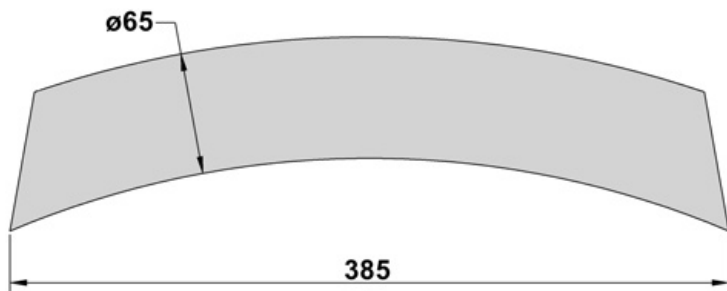
All dimensions in millimetres unless otherwise stated.



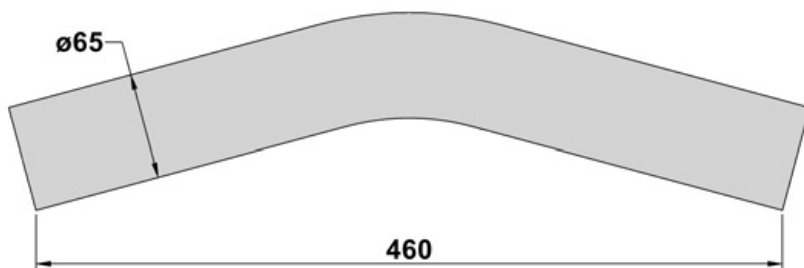
**PART REF: BFD1845**  
MATERIAL: 150M19 | SELF COLOUR



**PART REF: BFD3952**  
MATERIAL: 150M19 | SELF COLOUR



**PART REF: BFD4043**  
MATERIAL: 150M19 | SELF COLOUR

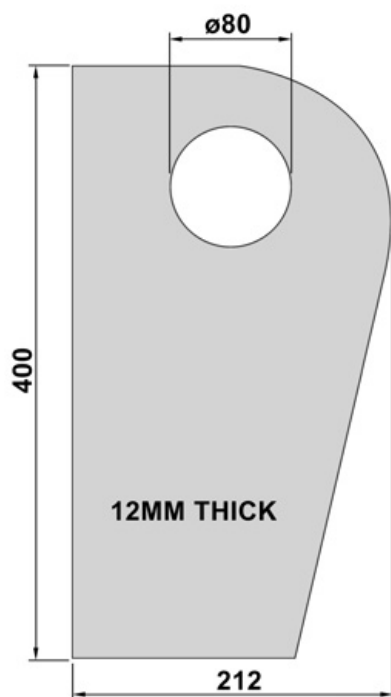


**PART REF: BFD4225**  
MATERIAL: 150M19 | SELF COLOUR

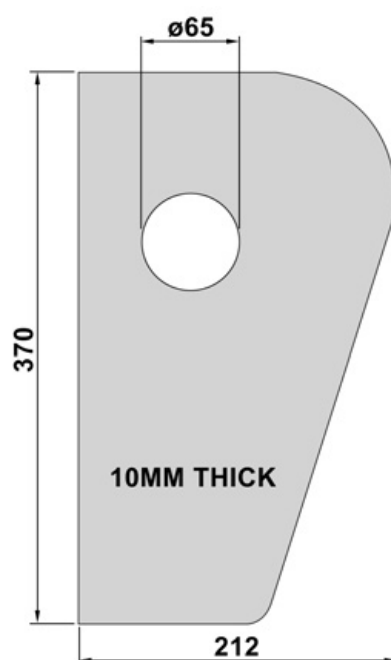
**ALSO AVAILABLE IN  
080M40 (EN8) MATERIAL**

## CHEEK PLATES FOR CURVED BARS

All dimensions in millimetres unless otherwise stated.



**PART REF: BFD7296**  
MATERIAL: MILD STEEL | SELF COLOUR



**PART REF: BFD6904**  
MATERIAL: MILD STEEL | SELF COLOUR

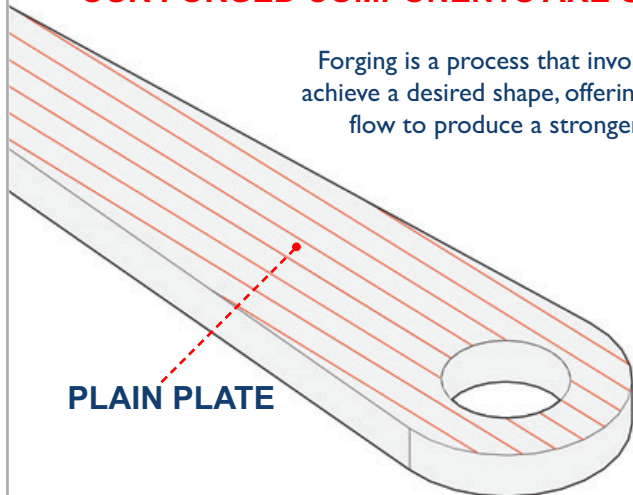


## SKIP HINGES

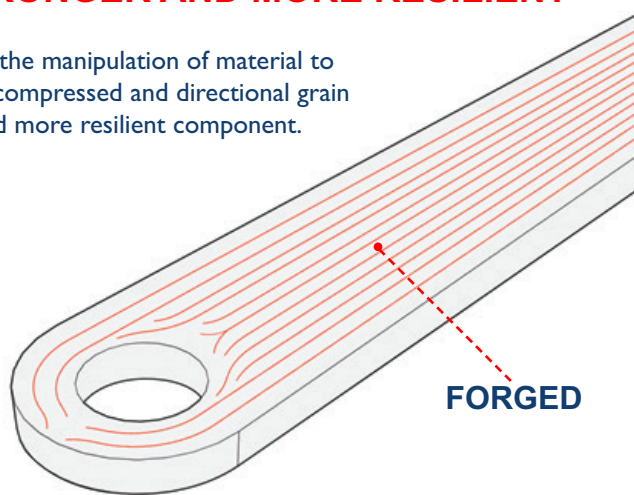
### OUR FORGED COMPONENTS ARE STRONGER AND MORE RESILIENT

Forging is a process that involves the manipulation of material to achieve a desired shape, offering a compressed and directional grain flow to produce a stronger and more resilient component.

PLAIN PLATE



FORGED



Many components supplied into the recycling and waste industry, particularly metal profiles, are cut from plain material. The unidirectional grain flow in the plain material gets cut when changing contour, exposing grain ends. This renders the material liable to fatigue and sensitive to stress corrosion cracking.

Our example above shows a hinge profile, a component subjected to a constant load. In a **forged** state the grain flow is not only compressed but flows around the eye. **This increases both strength and longevity.** In a plain state the profile is cut, exposing the natural grain flow on all cut edges.

**PART REF: BFD3437**  
**MATERIAL: MILD STEEL**



**HINGE CAN BE ASSEMBLED TO SUIT LEFT  
OR RIGHT HAND APPLICATION**

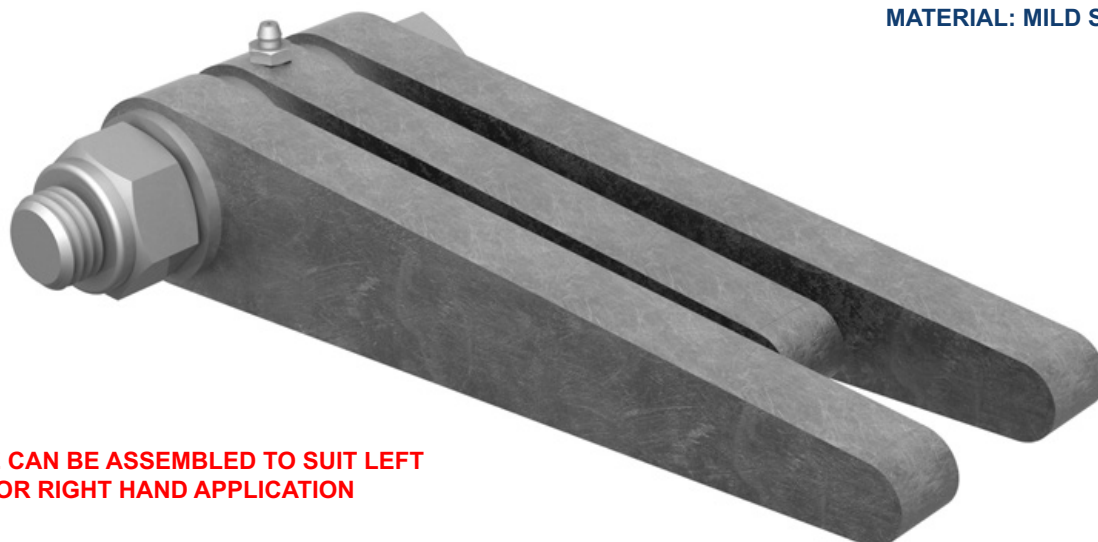
**M24 ZINC PLATED 8.8 BOLT X 120 LONG**

**M24 ZINC PLATED WASHERS (X6)**

**M24 ZINC PLATED LOCKING NUT  
(PLASTIC INSERT TYPE)**



## SKIP HINGES



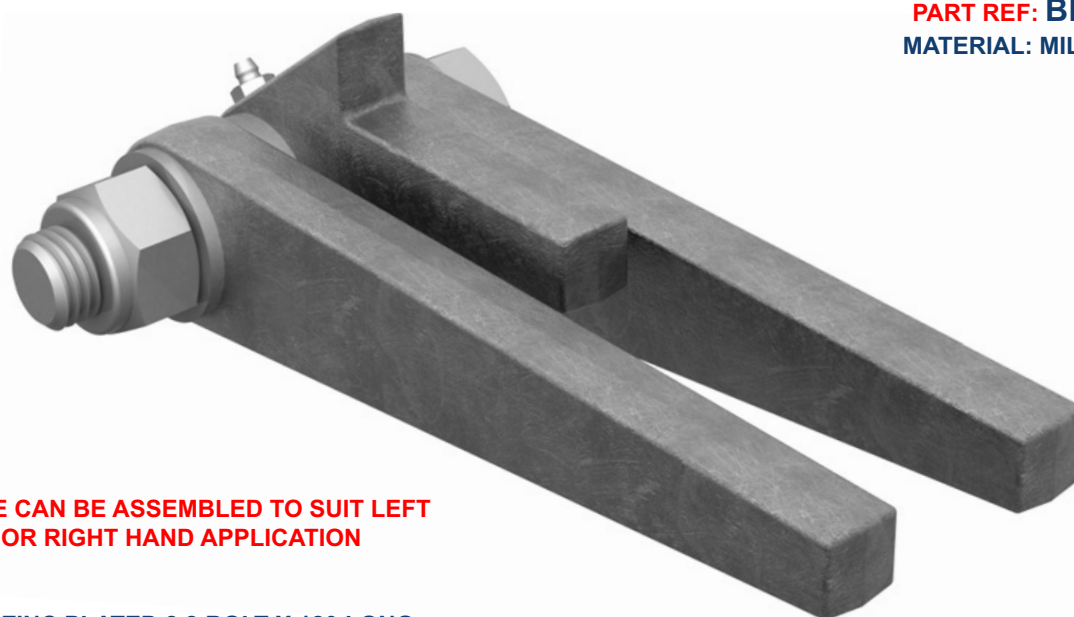
**PART REF: BFD3616**  
**MATERIAL: MILD STEEL**

**HINGE CAN BE ASSEMBLED TO SUIT LEFT  
OR RIGHT HAND APPLICATION**

**M24 ZINC PLATED 8.8 BOLT X 120 LONG**

**M24 ZINC PLATED WASHERS (X6)**

**M24 ZINC PLATED LOCKING NUT  
(PLASTIC INSERT TYPE)**



**PART REF: BFD3296**  
**MATERIAL: MILD STEEL**

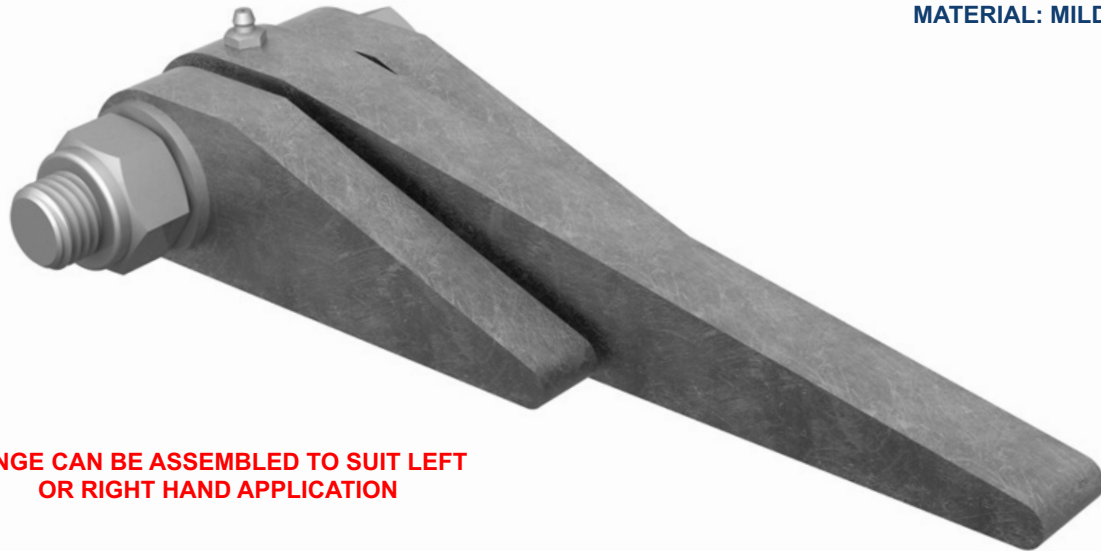
**HINGE CAN BE ASSEMBLED TO SUIT LEFT  
OR RIGHT HAND APPLICATION**

**M24 ZINC PLATED 8.8 BOLT X 120 LONG**

**M24 ZINC PLATED WASHERS (X6)**

**M24 ZINC PLATED LOCKING NUT  
(PLASTIC INSERT TYPE)**

## SKIP HINGES



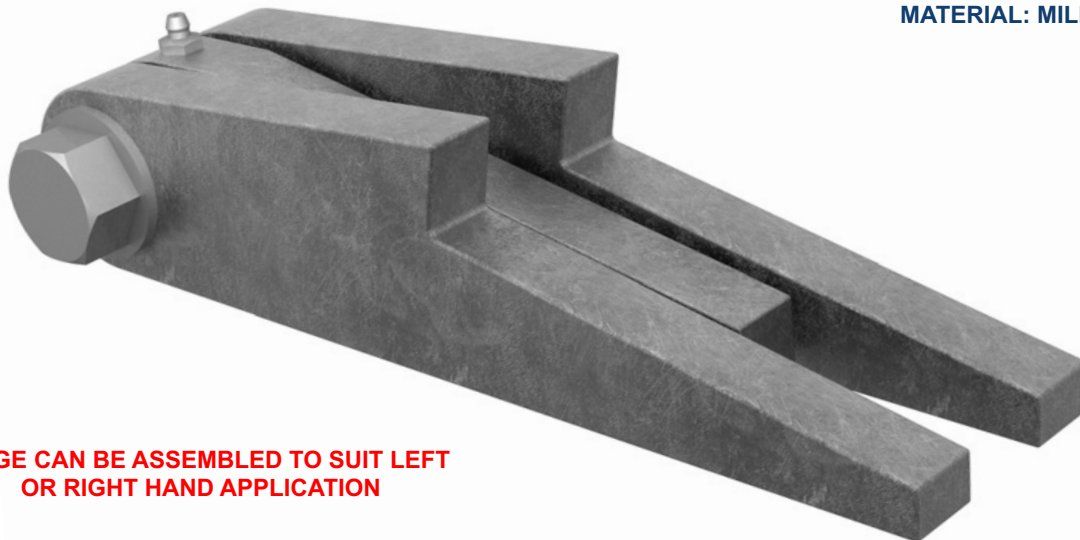
**PART REF: BFD4666**  
**MATERIAL: MILD STEEL**

**HINGE CAN BE ASSEMBLED TO SUIT LEFT  
OR RIGHT HAND APPLICATION**

**M24 GALVANISED 8.8 BOLT X 120 LONG**

**M24 GALVANISED WASHERS (X6)**

**M24 GALVANISED LOCKING NUT  
(PLASTIC INSERT TYPE)**



**PART REF: BFD4146**  
**MATERIAL: MILD STEEL**

**HINGE CAN BE ASSEMBLED TO SUIT LEFT  
OR RIGHT HAND APPLICATION**

**M24 GALVANISED 8.8 BOLT X 120 LONG**

**M24 GALVANISED WASHERS (X6)**

**M24 GALVANISED LOCKING NUT  
(PLASTIC INSERT TYPE)**

## SKIP ROLLERS

**PART REF: BFD4544**

MATERIAL: MILD STEEL | SELF COLOUR  
SIZE: 168MM OD X 200MM WIDE



**SUITABLE FOR 35MM Ø SHAFT**

**PART REF: BFD4017**

MATERIAL: MILD STEEL | SELF COLOUR  
SIZE: 220MM OD X 240MM WIDE



**SUITABLE FOR 40MM Ø SHAFT**

**PART REF: BFD6619**

MATERIAL: MILD STEEL | SELF COLOUR  
SIZE: 168MM OD X 270MM WIDE



**SUITABLE FOR 35MM Ø SHAFT**

**PART REF: BFD4719**

MATERIAL: MILD STEEL | SELF COLOUR  
SIZE: 220MM OD X 200MM WIDE



**SUITABLE FOR 40MM Ø SHAFT**

**PART REF: BFD5476 'POLY ROLLER'**

MATERIAL: MILD STEEL | SELF COLOUR  
SIZE: 220MM OD X 200MM WIDE

**POLYURETHANE LAYER ON  
ROLLER SURFACE**

**25MM THICK  
REDUCES NOISE**

**SUITABLE FOR 35MM Ø SHAFT**



**FOR ROLLER SHAFTS & MOUNTING PLATES SEE PAGES 9 & 10**

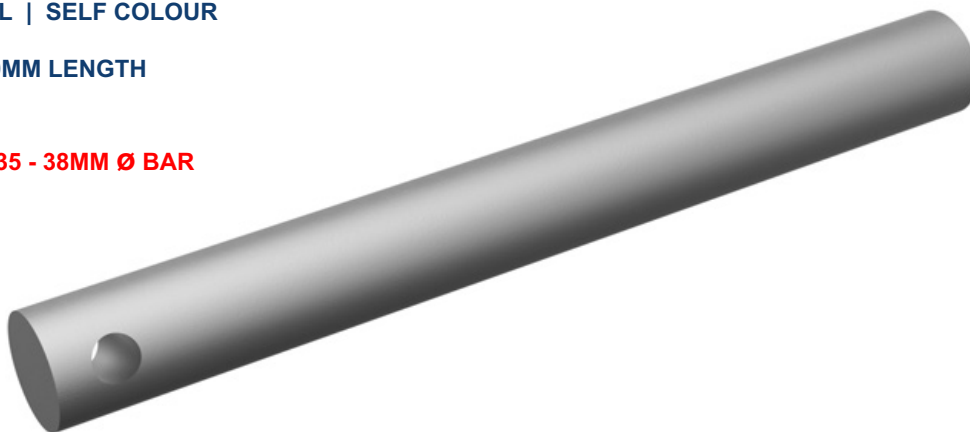
## SHAFTS FOR SKIP ROLLERS

**PART REF: BFD7080**

**MATERIAL: MILD STEEL | SELF COLOUR**

**35MM DIAMETER X 320MM LENGTH  
14MM THRU HOLE**

**FOR ROLLERS USING 35 - 38MM Ø BAR**

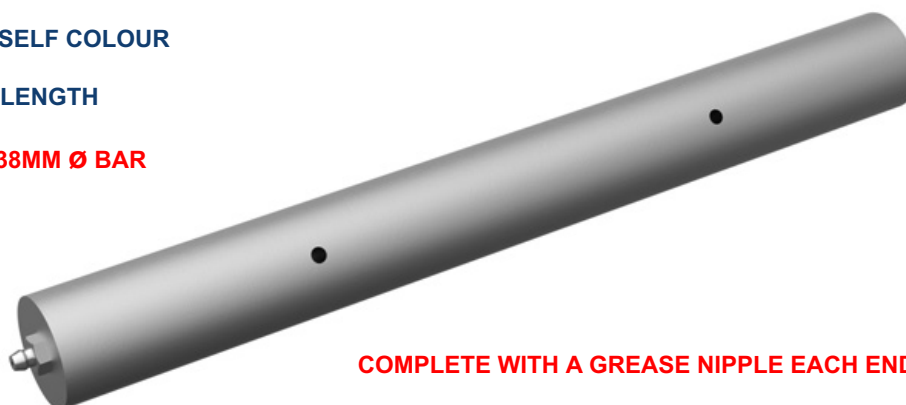


**PART REF: BFD5712**

**MATERIAL: MILD STEEL | SELF COLOUR**

**35MM DIAMETER X 320MM LENGTH**

**FOR ROLLERS USING 35 - 38MM Ø BAR**



**COMPLETE WITH A GREASE NIPPLE EACH END**

**ALLOWS EASY LUBRICATION WHILST ROLLER  
IS INSTALLED**

**PART REF: BFD6267**

**MATERIAL: MILD STEEL | SELF COLOUR**

**40MM DIAMETER X 350MM LENGTH**

**FOR ROLLERS USING 40MM Ø BAR**



**COMPLETE WITH A GREASE NIPPLE EACH END**

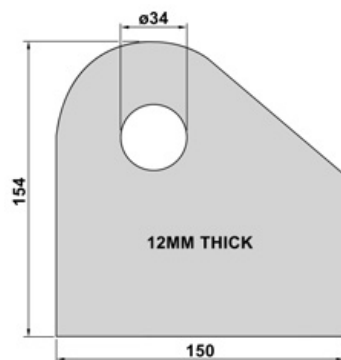
**ALLOWS EASY LUBRICATION WHILST ROLLER  
IS INSTALLED**



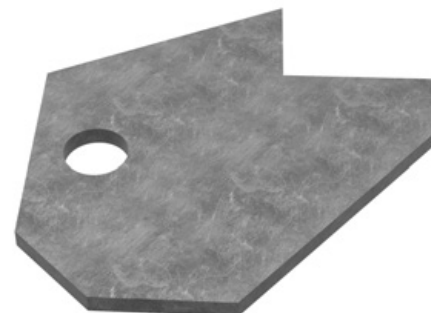
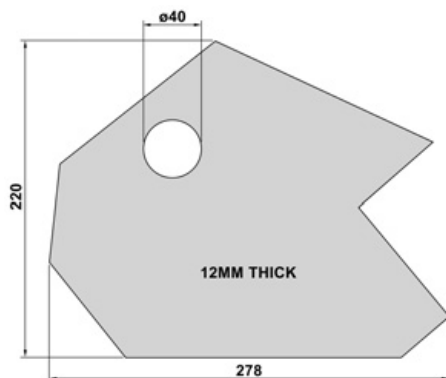
## PLATES FOR SKIP ROLLERS

All dimensions in millimetres unless otherwise stated.

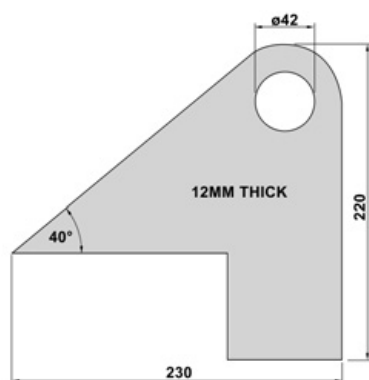
**PART REF: BFD7297**  
**MATERIAL: MILD STEEL**  
**FINISH: SELF COLOUR**



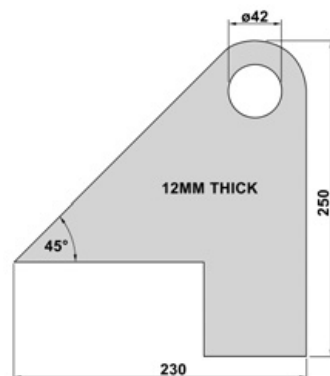
**PART REF: BFD6905**  
**MATERIAL: MILD STEEL**  
**FINISH: SELF COLOUR**



**PART REF: BFD6903**  
**MATERIAL: MILD STEEL**  
**FINISH: SELF COLOUR**



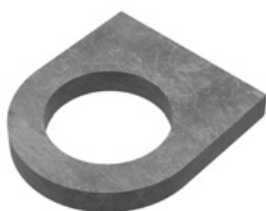
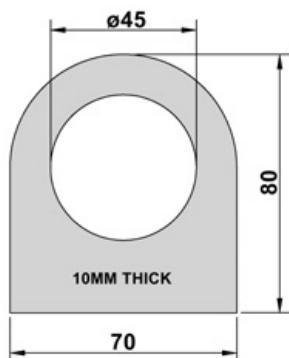
**PART REF: BFD7099**  
**MATERIAL: MILD STEEL**  
**FINISH: SELF COLOUR**



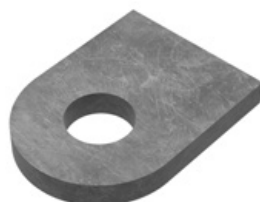
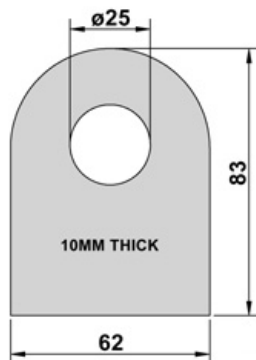
## SKIP PROFILES

All dimensions in millimetres unless otherwise stated. Self colour mild steel.

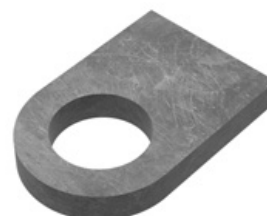
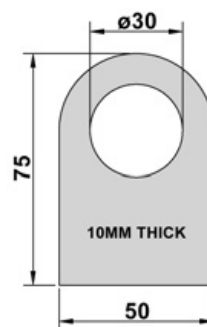
**PART REF: BFD4171**



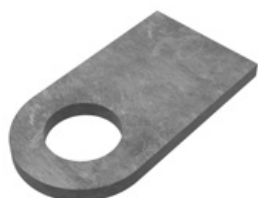
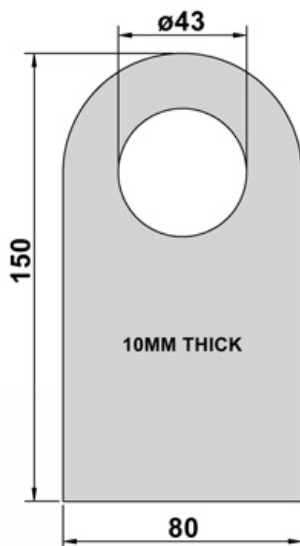
**PART REF: BFD4537**



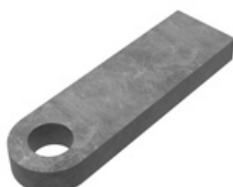
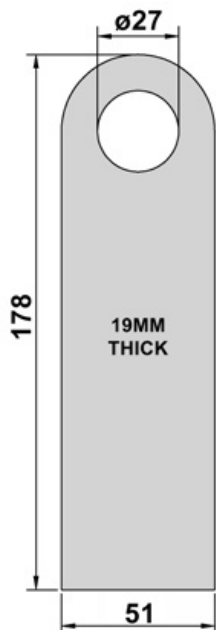
**PART REF: BFD4170**



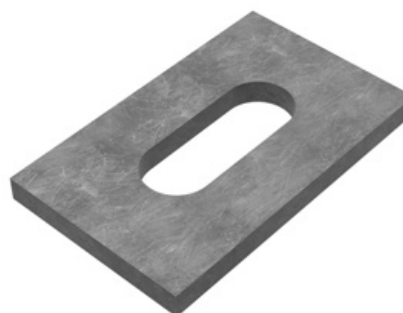
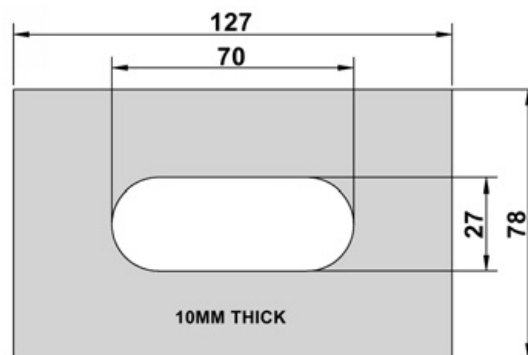
**PART REF: BFD4538**



**PART REF: BFD4539**



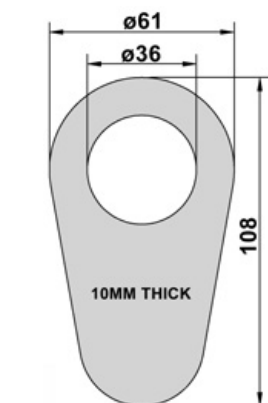
**PART REF: BFD4540**



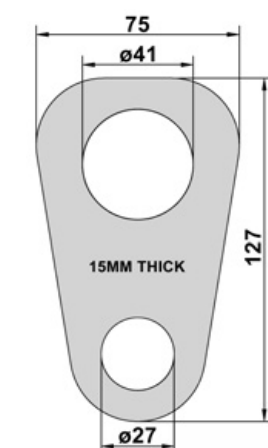
## SKIP PROFILES

All dimensions in millimetres unless otherwise stated. Self colour mild steel.

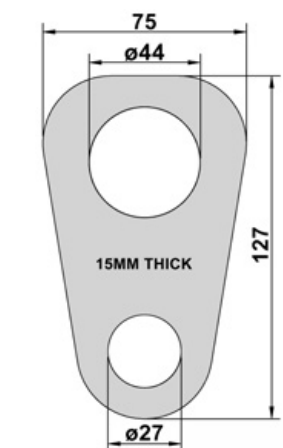
**PART REF: BFD4543**



**PART REF: BFD4174**



**PART REF: BFD6161**



## PINS & HANDLES

**PART REF: BFD4959**

MATERIAL: MILD STEEL | SELF COLOUR

25MM DIAMETER X 550MM LENGTH  
 100MM TAPER DOWN TO 15MM FLAT POINT



**PART REF: BFD7118**

MATERIAL: MILD STEEL | SELF COLOUR

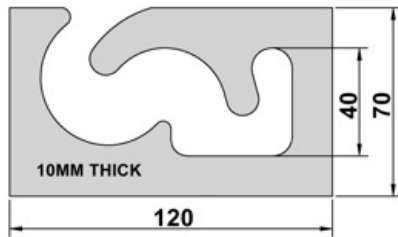
255MM OVERALL LENGTH  
 80MM OVERALL HEIGHT  
 20MM DIAMETER MATERIAL



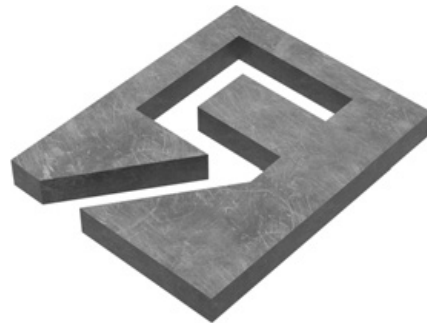
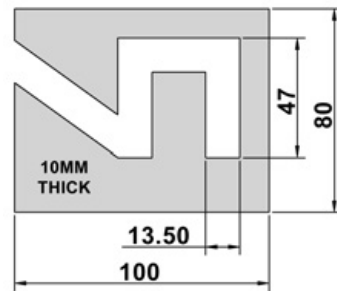
## LABYRINTH PLATES

All dimensions in millimetres unless otherwise stated. Self colour mild steel.

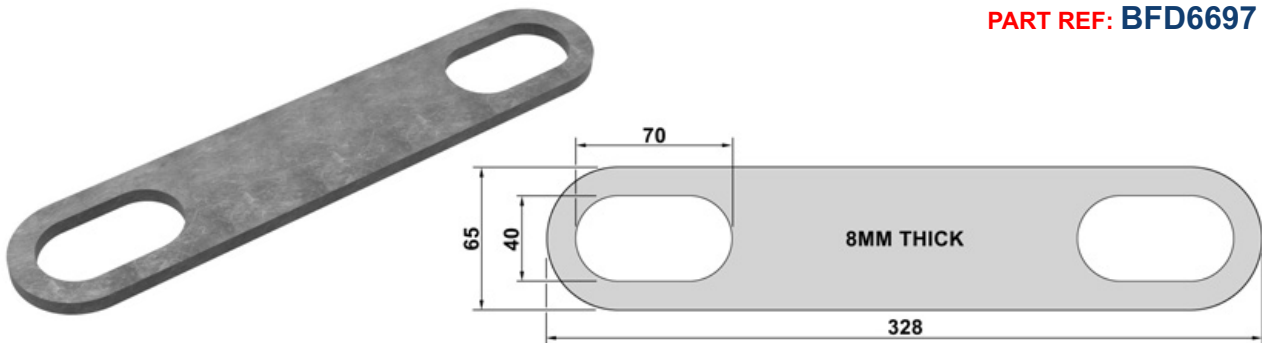
**PART REF: BFD4173**



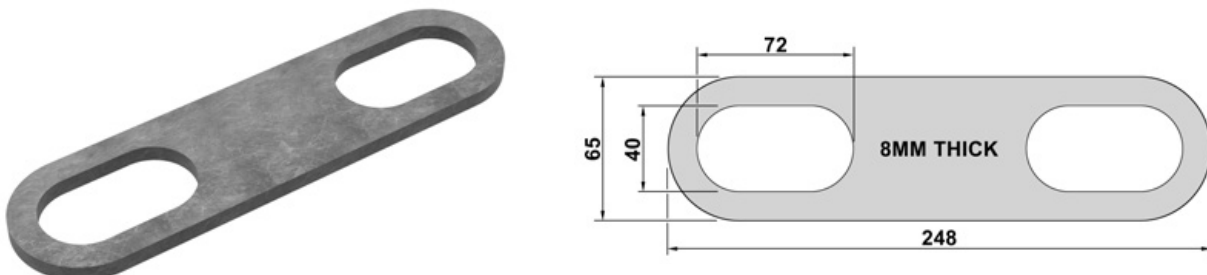
**PART REF: BFD4541**



**PART REF: BFD6697**



**PART REF: BFD6136**





## DOOR LOCK COMPONENTS

All dimensions in millimetres unless otherwise stated. Self colour mild steel.



**Double Legged U-Bar**

**PART REF: BFD6919**

FROM 20MM DIAMETER BAR  
372MM X 120MM TALL  
LEGS AT 130MM CENTERS

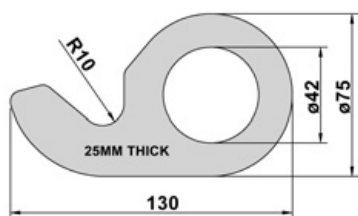


**Door Lock Plate**

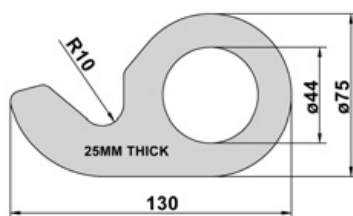
**PART REF: BFD7298**

FROM 12MM THICK PLATE  
530MM LONG X 130MM WIDE  
60MM X 72MM SLOT

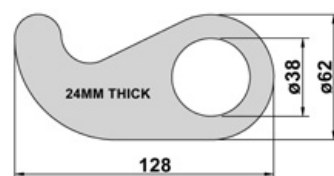
**PART REF: BFD6741**  
42MM HOLE



**PART REF: BFD4172**  
44MM HOLE



**PART REF: BFD4542**  
38MM HOLE



## RATCHET LOAD BINDERS



**PART REF: BFD4018**  
**3/8" RATCHET LOAD BINDER**  
( 8MM - 10MM )

**SUITABLE FOR M20 BOLT**  
FINISH: POWDER COATED YELLOW  
250MM PULL CAPACITY  
WORKING LOAD: 2449KG (5400LBS)

**PART REF: BFD6018**  
**5/8" RATCHET LOAD BINDER**  
( 13MM - 16MM )

**SUITABLE FOR M24 BOLT**  
FINISH: POWDER COATED YELLOW  
250MM PULL CAPACITY  
WORKING LOAD: 5896KG (13000LBS)

**\*\*WE CAN ALSO SUPPLY M20 & M24 HEXAGON BOLTS\*\***



**PART REF: BFD7514**  
**3/8" RATCHET LOAD BINDER**  
HOOK TYPE ( 8MM - 10MM )

**SUITABLE FOR M20 BOLT**  
FINISH: POWDER COATED RED  
250MM PULL CAPACITY  
WORKING LOAD: 2449KG (5400LBS)

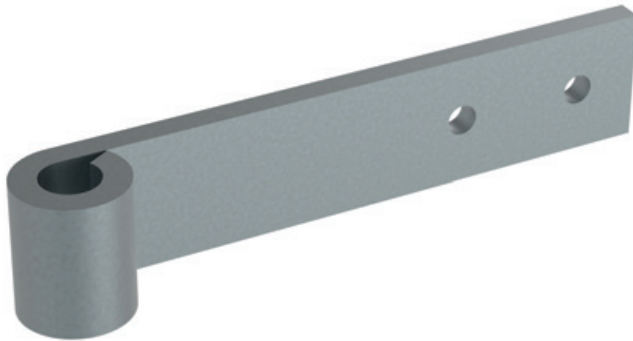
**PART REF: BFD7515**  
**5/8" RATCHET LOAD BINDER**  
HOOK TYPE ( 13MM - 16MM )

**SUITABLE FOR M24 BOLT**  
FINISH: POWDER COATED RED  
250MM PULL CAPACITY  
WORKING LOAD: 5896KG (13000LBS)

Please Call Us Today With Your Requirements  
**+44 (0)1384 563356**

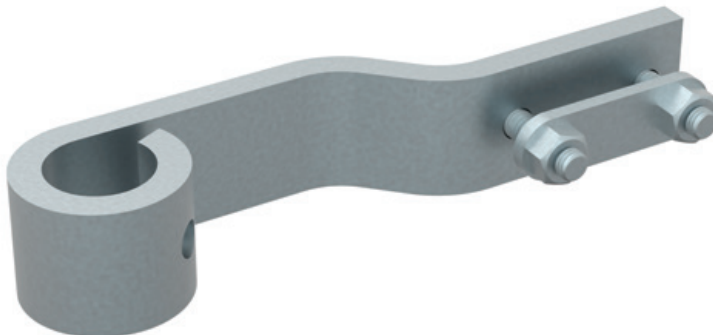
**BROOKS** forgings  
SKIP COMPONENT CATALOGUE

## EUROBIN ACCESSORIES



**PART REF: BFD3518**  
MATERIAL: MILD STEEL | BZP

TO SUIT 16MM DIAMETER PIN  
6MM THICK MATERIAL  
7MM HOLES @ 30MM CENTRES

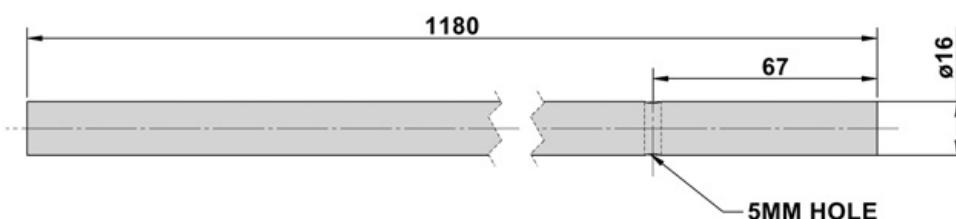


**PART REF: BFD3816**  
MATERIAL: MILD STEEL | BZP

TO SUIT 19MM DIAMETER PIN  
6MM THICK MATERIAL  
M6 X 18MM THREADS @ 30MM CENTRES  
C/W NYLOCK NUTS



**PART REF: BFD7516**  
MATERIAL: MILD STEEL | BZP

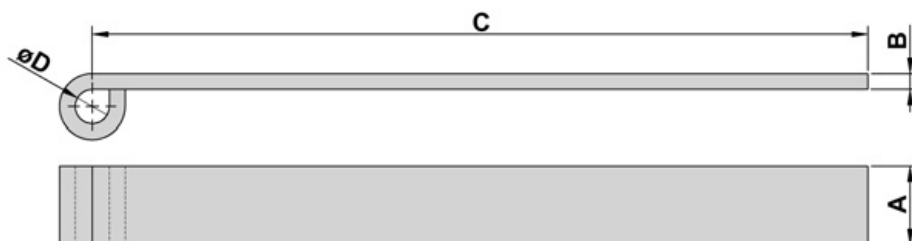


## SKIP ACCESSORIES

All dimensions in millimetres unless otherwise stated.

### Strap Hinge

MATERIAL: MILD STEEL | SELF COLOUR

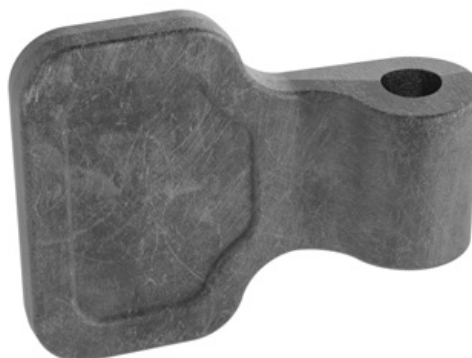


	A	B	C		D
	mm	mm	mm	inch	mm
PART REF: BFD6317	30	6	152	6	13
PART REF: BFD6571	30	6	304	12	13
PART REF: BFD7517	30	6	457	18	13

### Spade Hinge

PART REF: BFD7518

MATERIAL: MILD STEEL | SELF COLOUR



### Hinge Pin

PART REF: BFD7519

MATERIAL: MILD STEEL | SELF COLOUR

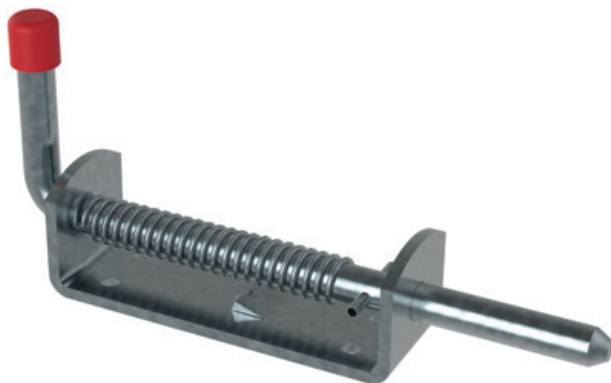




## SKIP ACCESSORIES

All dimensions in millimetres unless otherwise stated.

### Spring Loaded Bolt



**10MM**

**PART REF: BFD5131**

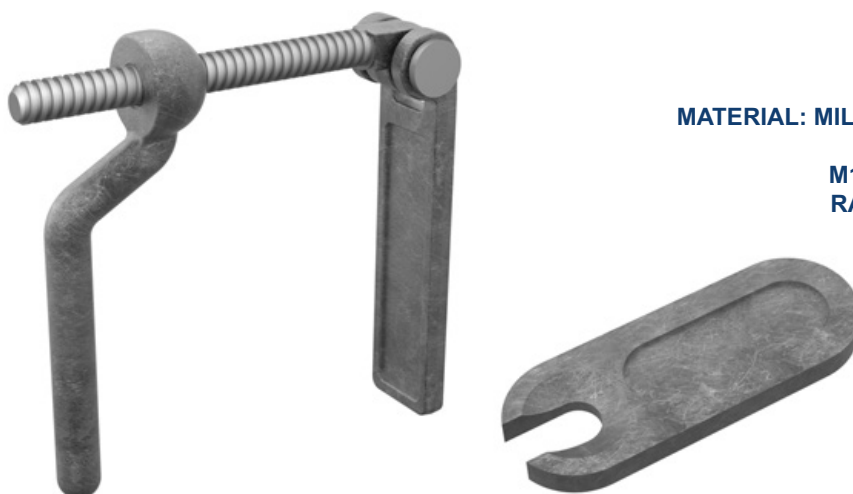
**MATERIAL: MILD STEEL | BZP**

**12MM**

**PART REF: BFD5130**

**MATERIAL: MILD STEEL | BZP**

### Ramp Fastener



**PART REF: BFD7520**

**MATERIAL: MILD STEEL | SELF COLOUR**

**M16 ACME THREADED TYPE  
RAMP RECEIVER INCLUDED**

### Pallet Feet



**PART REF: BFD7521**

**MATERIAL: MILD STEEL | SELF COLOUR**

**127 X 127 X52MM  
19MM SQUARE HOLE  
(0138)**

## SKIP ACCESSORIES

### Locking Pin

**PART REF: BFD4428**

**MATERIAL: MILD STEEL | BZP | RAL1023**



### Locking Bar Set

**PART REF: BFD5132**

**MATERIAL: MILD STEEL**



**SPARES ARE AVAILABLE UPON REQUEST**

### Spring Lock & Chain

**PART REF: BFD7522**

**MATERIAL: MILD STEEL | BZP**



### Chain

**PART REF: BFD7523**

**MATERIAL: MILD STEEL**



**LENGTH: 1 METRE  
LINKS: 5MM X 25MM**

### Fastening Lug - Weld Type

**PART REF: BFD5091**

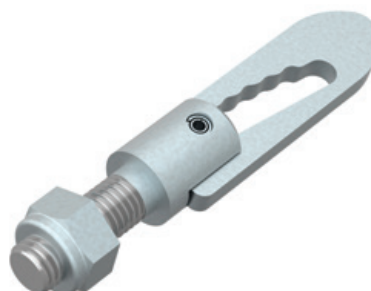
**MATERIAL: MILD STEEL | BZP**



### Fastening Lug - Screw Type

**PART REF: BFD5092**

**MATERIAL: MILD STEEL | BZP**



## SKIP ACCESSORIES

### Tailboard Lugs

**PART REF: BFD7527**

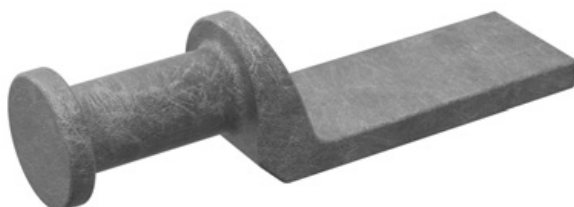
**3/4" TAILBOARD LUG**

MATERIAL: MILD STEEL | SELF COLOUR

**PART REF: BFD7539**

**5/8" TAILBOARD LUG**

MATERIAL: MILD STEEL | SELF COLOUR



### Pin & Chain

**PART REF: BFD7538**

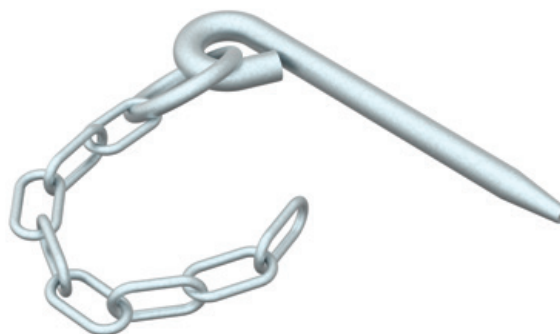
**FORKET PIN FOR 3/4"**

MATERIAL: MILD STEEL | BZP

**PART REF: BFD7547**

**FORKET PIN FOR 5/8"**

MATERIAL: MILD STEEL | BZP



### Weld On Tailboard Forkets



**PART REF: BFD7524**

**3/4" TAILBOARD FORKET**

MATERIAL: MILD STEEL | SELF COLOUR

**PART REF: BFD7525**

**5/8" TAILBOARD FORKET**

MATERIAL: MILD STEEL | SELF COLOUR

### Weld On Tailboard Forket with Tail



**PART REF: BFD7526**

**3/4" FORKET WITH TAIL**

MATERIAL: MILD STEEL | SELF COLOUR

**PART REF: BFD7546**

**5/8" FORKET WITH TAIL**

MATERIAL: MILD STEEL | SELF COLOUR

## SKIP ACCESSORIES

### Rope Hook

**PART REF:** BFD5083

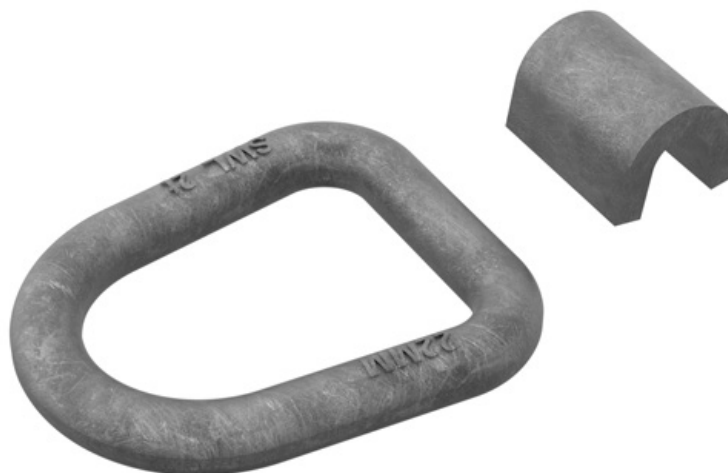
**MATERIAL:** MILD STEEL | SELF COLOUR



### Lashing Ring & Staple Set

**PART REF:** BFD3241

**MATERIAL:** MILD STEEL | SELF COLOUR



### Strap Assembly

**PART REF:** BFD4694

**MATERIAL:** MILD STEEL | SELF COLOUR





Please Call Us Today With Your Requirements  
**+44 (0)1384 563356**

**BROOKS** forgings  
SKIP COMPONENT CATALOGUE

## CABLE LIFT HOOKS & GUIDES



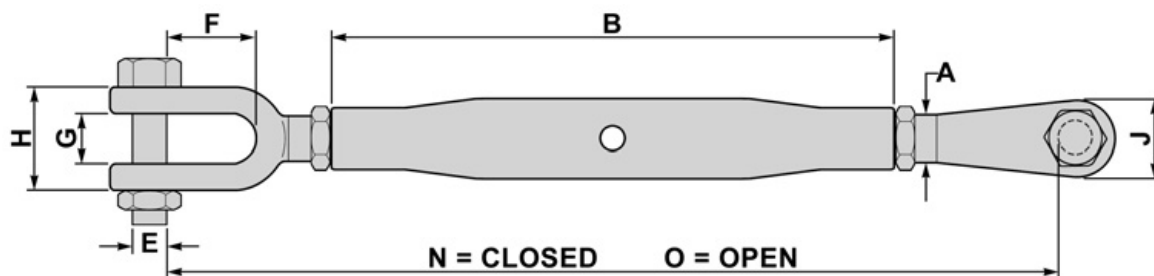
**SOLD IN FULL SETS ONLY**

**THESE ITEMS ARE NOT SUITABLE FOR WELDING  
TO BE BOLTED IN POSITION ONLY**

**WE CAN MANUFACTURE TO CUSTOMER REQUIREMENTS IN BULK QUANTITY**

**PLEASE CONTACT US WITH YOUR ENQUIRIES**

## CLOSED BODY RIGGING SCREWS



A	B	E	F	G	H	J	N	O	WLL	WT
Dia Thread	Length Body	Dia Pin	Length Inside	Opening Jaw	Width Jaw	Jaw Eye Dia	Length Closed	Length Open	Working Load Limit	Weight
mm	mm	mm	mm	mm	mm	mm	mm	mm	tons	kg
M6	100	5	16	7	20	13	170	250	0.20	0.15
M8	108	6	22	9	24	14	199	279	0.32	0.26
M10	125	8	22	10.5	28	19	222	312	0.50	0.45
M12	195	10	27	13	34	23	315	470	0.70	0.85
M16	230	12	33	18	42	29	388	568	1.20	1.51
M20	270	16	38	20	51	33	449	654	1.50	2.62
M22	295	20	45	25	55	38	490	715	2.20	3.94
M24	325	22	52	30	70	46	538	793	3.20	5.16
M33	370	30	70	38	82	60	680	965	4.80	11.60
M39	400	33	70	45	85	76	707	1002	6.00	14.20
M45	400	39	86	50	94	85	761	1011	8.50	20.80
M48	400	45	97	58	98	92	780	1005	11.00	24.00

**MATERIAL: MILD STEEL | GALVANISED**

**SAFETY FACTOR: MBL EQUALS 5xWLL**



## Manufacturing Capabilities

Our extensive range of manufacturing processes gives us the ability to supply to many different industry sectors.

By utilising our design department and the extensive knowledge at our disposal, we are able to offer a fully bespoke service.

**Very few companies in the industry are able to provide the same extent of services under one roof**



Robot Forging



Counterblow Forging



Upset Forging



Drop Forging



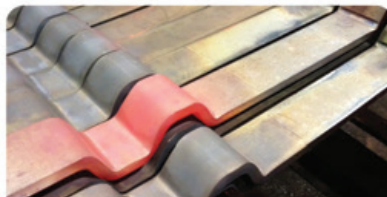
Open Die Forging



Hand Forging



Hot & Cold Bending



Hot & Cold Pressing



Swaging & Pointing



Machining



Fabrication & Assembly



Flash Butt Welding



Heritage & Replication



Quality Control



Warehousing



## Material Stock for Production

Material stock is considered a valuable resource at Brooks Forgings. By having dedicated warehousing, holding over 250 tonnes of stock, we have the capacity to purchase material in larger more economical volumes, minimising the requirement for multiple deliveries from suppliers.

# **BROOKS**forgings **SKIP COMPONENTS**

Brooks Forgings Ltd, Doulton Road, Cradley Heath, West Midlands, B64 5QJ, United Kingdom  
Telephone. **+44 (0)1384 563356** E-mail. **[sales@brooksforgings.co.uk](mailto:sales@brooksforgings.co.uk)** Website. **[www.brooksforgings.co.uk](http://www.brooksforgings.co.uk)**