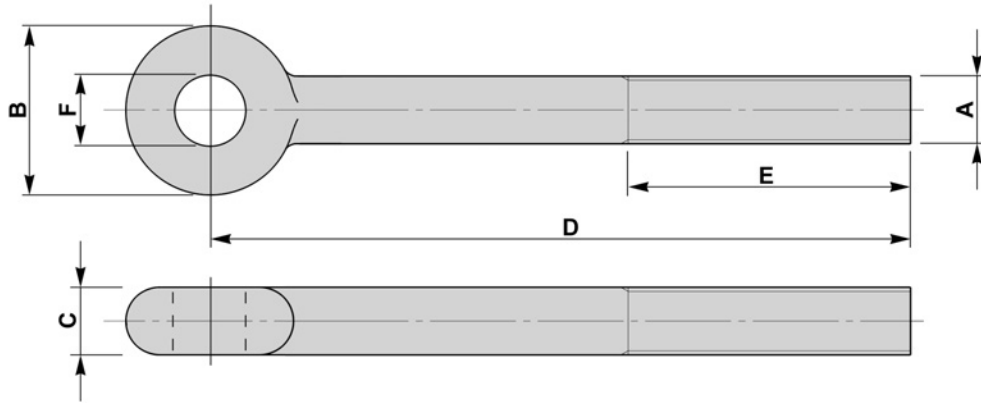


SHACKLE EYEBOLTS - CURVED SIDES

BFE 12



A		B	C	D		E		F
mm	inches	mm	MIN mm	MIN mm	MAX mm	MIN mm	MAX mm	
M6	1/4	16	6	30	3000	15	1500	To suit customers requirements Dimension "F" is generally drilled out to take corresponding dimension "A" of the same size
M8	5/16	19	8	30	3000	15	1500	
M10	3/8	19	10	35	3000	15	1500	
	3/8	22	10	35	3000	15	1500	
M12	1/2	32	13	40	3000	18	1500	
M16	5/8	38	16	45	5500	20	2000	
M20	3/4	38	20	50	5500	25	2000	
M22	7/8	50	22	60	5500	25	2000	
M24	1	50	26	65	5500	30	2000	
M27	1.1/8	60	28	68	5500	30	2000	
M30	1.1/4	60	32	70	5500	35	2000	
M36	1.1/2	60	38	100	5500	45	2000	
M42	1.5/8	90	42	115	5500	48	2000	
M45	1.3/4	102	45	120	5500	50	2000	
M48	2	115	51	135	5500	60	2000	

MATERIAL

CARBON STEELS
STAINLESS STEELS
ALLOY STEELS
B7, 4.6, 5.6, 8.8

FINISH

SELF COLOUR
GALVANISED
ELECTROPLATED
SHERARDISED
PTFE COATING

NON STANDARDS
AVAILABLE TO SUIT
CUSTOMER REQUIREMENTS