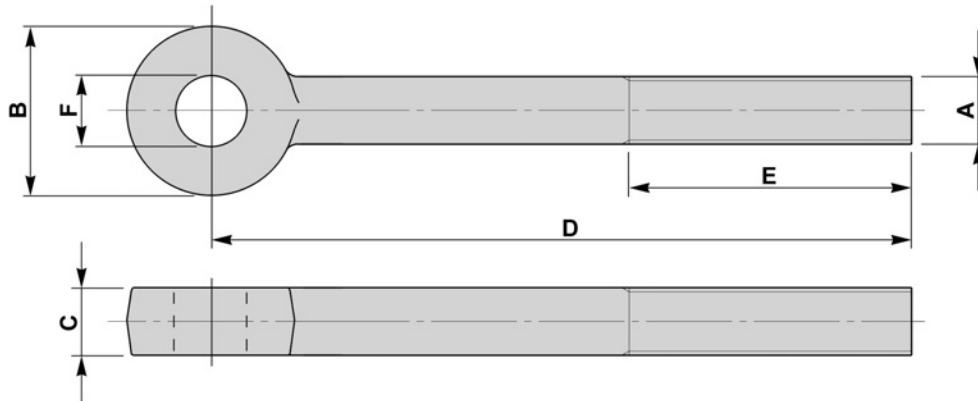


PALM EYEBOLTS - STRAIGHT SIDES

BFE 11



A		B	C	D		E		F
mm	inches	mm	mm	MIN mm	MAX mm	MIN mm	MAX mm	
M8	5/16	16	8	30	3000	15	1500	To suit customers requirements Dimension "F" is generally drilled out to take corresponding dimension "A" of the same size
M10	3/8	25	10	35	3000	15	1500	
M12	1/2	25	13	38	3000	18	1500	
	---	32	12	45	3000	18	1500	
M16	5/8	32	16	45	5500	20	2000	
	5/8	38	16	45	5500	20	2000	
M20	3/4	42	20	55	5500	25	2000	
	3/4	50	20	60	5500	25	2000	
M24	1	51	26	65	5500	30	2000	
	---	51	24	65	5500	30	2000	
M30	1. 1/8	60	30	70	5500	35	2000	
M33	1. 1/4	65	33	90	5500	40	2000	
M39	1. 1/2	90	39	95	5500	45	2000	
M56	2. 1/4	115	56	120	1000	50	800	
M64	2. 1/2	130	64	140	1000	60	800	
M72	2. 3/4	150	72	165	1000	75	800	
M76	3	150	76	170	1000	85	800	

MATERIAL

CARBON STEELS
STAINLESS STEELS
ALLOY STEELS
B7, 4.6, 5.6, 8.8

FINISH

SELF COLOUR
GALVANISED
ELECTROPLATED
SHERARDISED
PTFE COATING

NON STANDARDS
AVAILABLE TO SUIT
CUSTOMER REQUIREMENTS