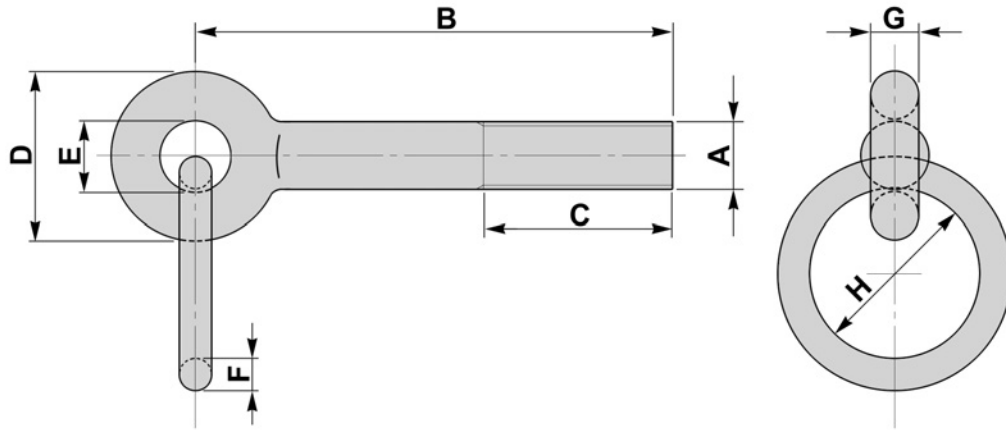


RING EYEBOLTS

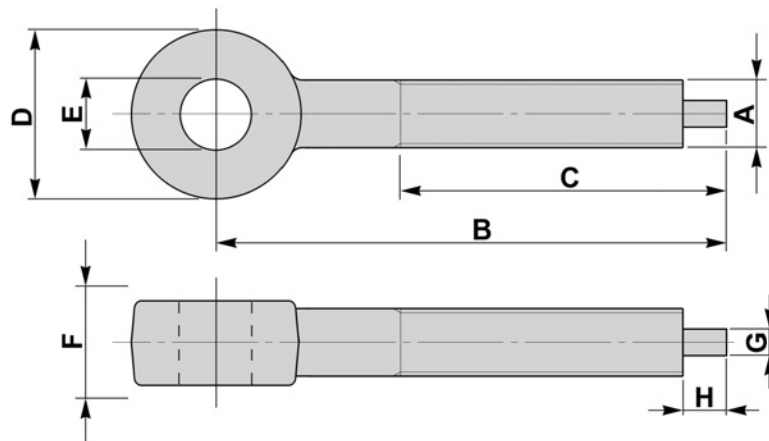
**BFE 29**



THREADS M6 - M100 (1/4" - 4")

NIB END EYEBOLTS

**BFE 30**



THREADS M6 - M100 (1/4" - 4")

**MATERIAL**

CARBON STEELS  
 STAINLESS STEELS  
 ALLOY STEELS  
 B7, 4.6, 5.6, 8.8

**FINISH**

SELF COLOUR  
 GALVANISED  
 ELECTROPLATED  
 SHERARDISED  
 PTFE COATING

**NON STANDARDS  
 AVAILABLE TO SUIT  
 CUSTOMER REQUIREMENTS**