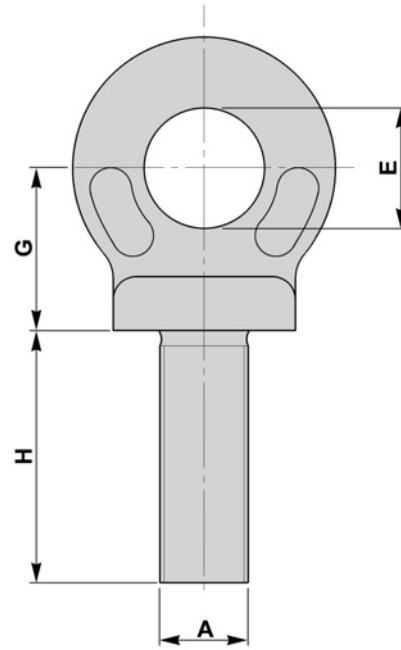
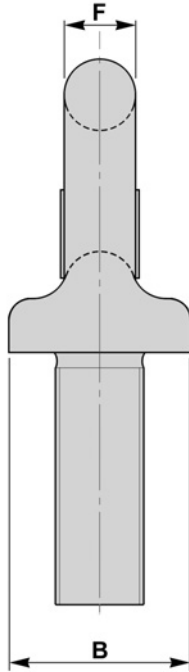


LONG SHANK COLLARED EYEBOLTS - METRIC

- PRODUCED FROM BS 529 FORGINGS



A	B	E	F	G	H	SWL	Weight Each
mm	mm	mm	mm	mm	mm	tonnes	kgs
M10	22	15	9	20	178	0.25	0.2
M12	28	19	11	25	178	0.40	0.2
M14	36	24	14	32	178	0.50	0.5
M16	36	24	14	32	178	0.80	0.5
M18	43	29	17	38	178	1.00	0.8
M20	43	29	17	38	178	1.60	0.8
M22	50	33	20	44	178	1.60	1.0
M24	57	38	22	51	178	2.50	1.5
M30	71	48	28	63	178	4.00	2.9

MATERIAL

BS970 080A27 (EN5A)
STAINLESS STEELS
ALLOY STEELS
B7

FINISH

SELF COLOUR
GALVANISED
ELECTROPLATED
CHEMICAL BLACK
SHERARDISED

**SWL IS SHOWN FOR
 VERTICAL LIFT**