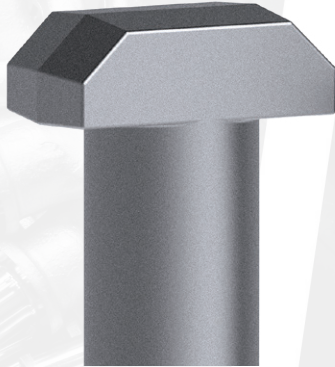
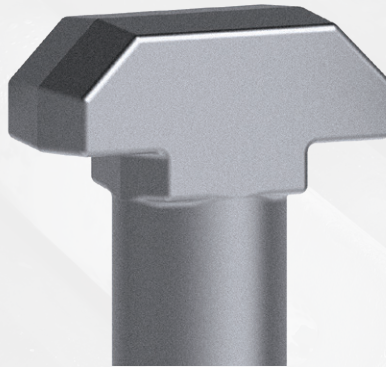


HAMMERHEAD T-BOLTS

British Made Hammerhead T-Bolts to DIN 261, DIN 7992, and SN425 for use in heavy industrial installation projects all over the globe. M24 up to M100 and 6 meter length.



DIN 261



DIN 7992



SN 425

FULLY REMOVABLE FOUNDATION SYSTEM

Hammerhead T-Bolts are designed to be used in conjunction with a fixed tube assembly that enables a fully removable bolting solution. Once installed, the bolts can be removed for inspection, replaced if required, or simply relocated and reused if the equipment moves site.

1. Welded tube assembly.
2. Hammerhead T-Bolt.
3. Hammerhead T-Bolt assembly.

4. The hammerhead t-bolt is inserted into the welded tube assembly that has already been set in concrete. The head passes through the slot in the washer plate and the slot at the end of the threaded shank indicates the position of the head.

5. Once the head is past the slot it is rotated through 90 degrees and pulled upwards. This also locates the head between the lugs inside the tube assembly that prevents rotation during the tensioning of the bolt.

