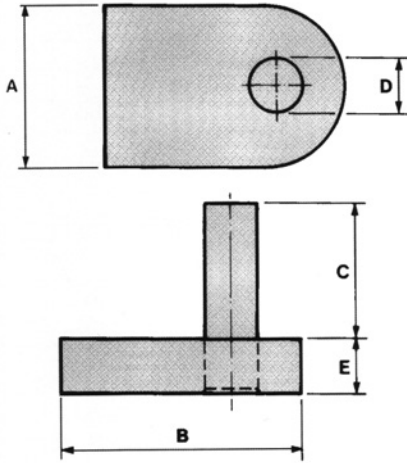


**Hooks To Weld**

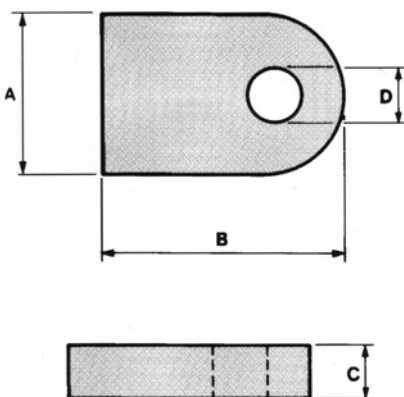


LIGHTWEIGHT VERSION						
Code	Pin Dia mm	A mm	B mm	C mm	D mm	E mm
36/1	12 LW	25	40	25	12	10
36/2	16 LW	45	60	50	16	16
36/3	20 LW	45	60	50	20	16

HEAVYWEIGHT VERSION						
Code	Pin Dia mm	A mm	B mm	C mm	D mm	E mm
36/4	12 HD	51	64	62	12	20
36/5*	16 HD	51	64	62	16	20
36/6*	20 HD	51	64	62	20	20
36/7	25 HD	51	64	62	25	20

\* Preferred sizes

**Eyes To Weld**



LIGHTWEIGHT VERSION					
Code	Pin Dia mm	A mm	B mm	C mm	D mm
36/8	12 LW	25	40	10	13
36/9	16 LW	45	60	16	18
36/10	20 LW	45	60	16	22

HEAVYWEIGHT VERSION					
Code	Pin Dia mm	A mm	B mm	C mm	D mm
36/11	12 HD	51	64	20	14
36/12*	16 HD	51	64	20	18
36/13*	20 HD	51	64	20	22
36/14	25 HD	50	64	20	27

\* Preferred sizes