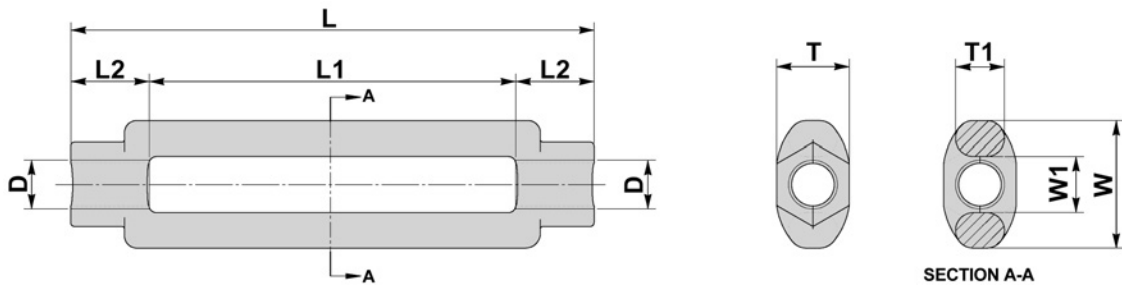


HEXAGON TURNBUCKLE - OPEN BODY

- SIMILAR TO BS 4429

BFF 23



D	L	T1	T	L1	L2	W	W1
Thread	mm	mm	mm	mm	mm	mm	mm
M10	184	10	16.7	150	17	28	12
M12	190	12	18.7	150	20	31	15
M16	202	16	23.7	150	26	41	19
M20	214	20	29.7	150	32	49	23
M24	228	24	35.4	150	39	59	29
M30	256	30	45.4	150	53	67	35
(M36)	276	39	59.3	150	63	85	45
(M42)	276	39	59.3	150	63	85	45

() = NON STANDARDS PRODUCED FROM 39MM FORGINGS

MATERIAL

CARBON STEELS
STAINLESS STEELS
ALLOY STEELS
B7, 4.6, 5.6, 8.8

FINISH

SELF COLOUR
GALVANISED
ELECTROPLATED
SHERARDISED
PTFE COATING

