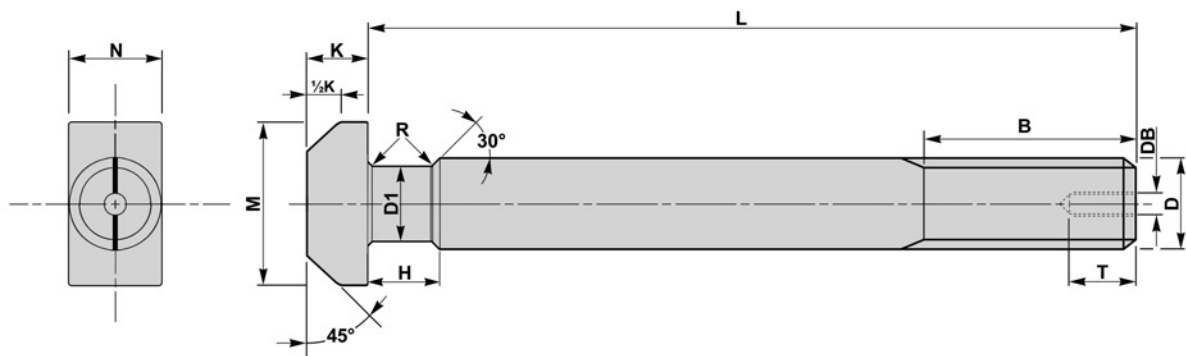


SN 425 - HAMMERHEAD T BOLTS

BOLTS ARE MANUFACTURED TO SN 425. SIMILAR TO THOSE SPECIFIED IN DIN 261



D	DI	B	H	DB	K	N	M	R	T
mm	mm	mm	mm	mm	mm	mm	mm	mm	max
M24	20	100	12	-	15	24	43	2	-
M30	26	120	15	-	19	30	54	2	-
M36	31	160	18	M12	23	36	66	3	23
M42	37	180	21	M12	26	42	80	3	23
M48	42	210	24	M12	30	48	88	3	23
M56	49	250	28	M16	35	56	102	4	30
M64	57	280	32	M16	40	64	115	4	30
M72	65	300	36	M16	45	72	128	4	30
M80	73	320	36	M20	50	80	140	5	33
M90	83	360	45	M20	55	90	155	5	33
M100	93	400	45	M20	62	100	170	5	33

MANUFACTURED TO GRADE 5.6 AND GRADE 8.8 TO ISO 898-1