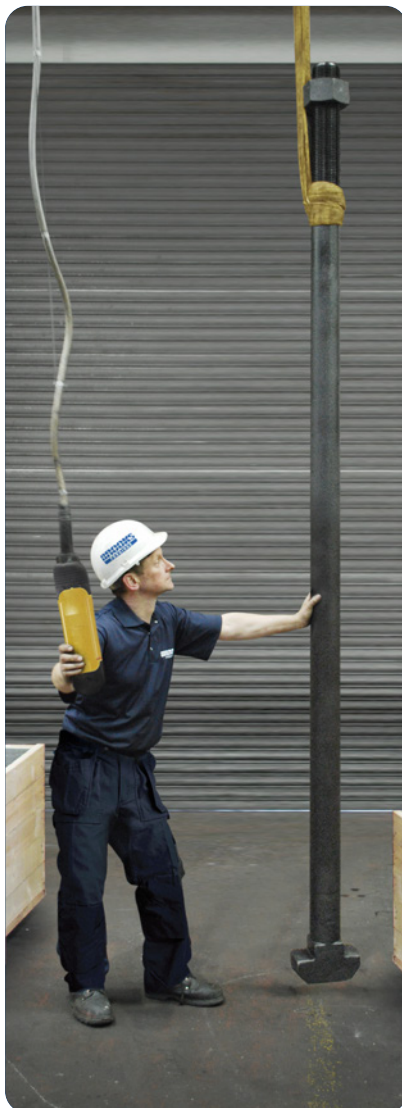
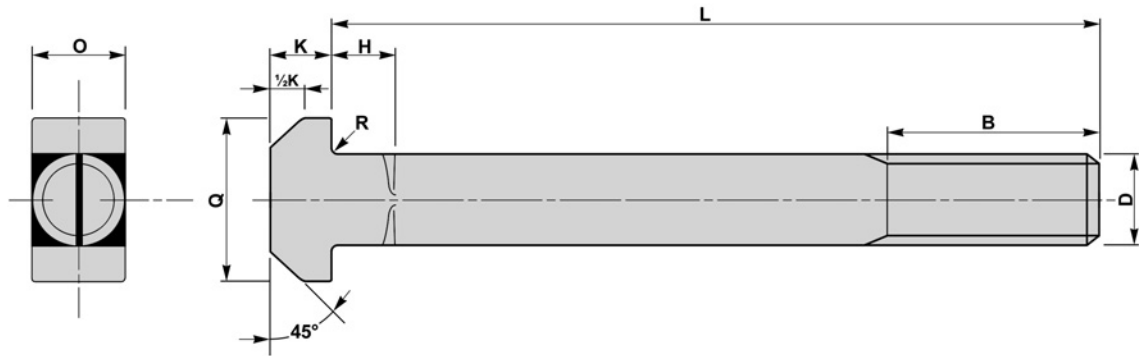


## DIN 7992 - HAMMERHEAD T BOLTS

**BOLTS ARE MANUFACTURED TO REQUIRED LENGTHS IN ACCORDANCE TO DIN 7992**



d	B	H	K	O	Q	R
mm ø	mm	mm	mm	mm	mm	mm
M24	100	18	18	24	65	1.6
M30	120	20	22	30	75	1.6
M36	140	25	25	36	85	2
M42	170	30	30	42	95	2
M48	200	30	35	48	110	2
M56	220	30	40	56	125	3
M64	240	30	50	64	140	3
M72 X 6	260	30	55	72	155	4
M80 X 6	290	30	60	80	170	4
M90 X 6	320	30	70	90	185	4
M100 X 6	350	30	75	100	205	5

### SLOTTED PLATES - PAGE 40



#### MATERIAL

**CARBON STEELS**  
**STAINLESS STEELS**  
**ALLOY STEELS**  
**B7, 4.6, 5.6, 8.8**

#### FINISH

**SELF COLOUR**  
**GALVANISED**  
**ELECTROPLATED**  
**SHERARDISED**  
**PTFE COATING**