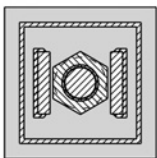
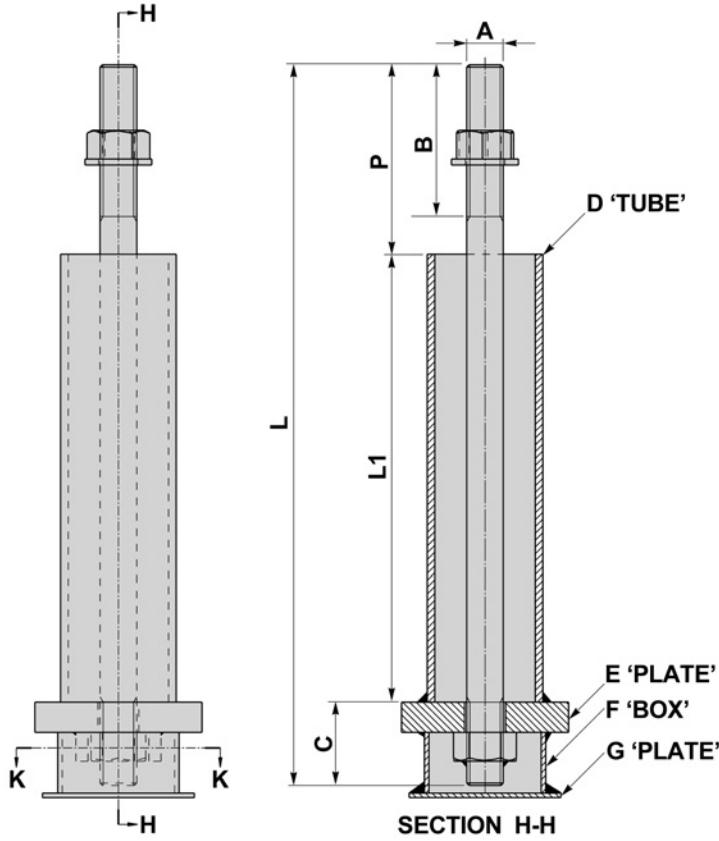




**BOLT ASSEMBLIES - WITH TUBE, PLATE, LUGS & BOX**



SECTION K-K

**COMPLETE WITH LUGS  
TO PREVENT ROTATION**

A	C	D	E	F	G	B	L	LI	P
mm	mm	mm	mm	mm	mm	mm	mm	mm	mm
M16	35	48.3	80x80x10	70x70x30	80x80x3	<b>TO SUIT CUSTOMER REQUIREMENTS</b>			
M20	45	48.3	80x80x15	70x70x35	80x80x3				
M24	55	76.1	110x110x20	80x80x40	100x100x3				
M27	65	76.1	110x110x25	90x90x50	110x100x3				
M30	70	76.1	110x110x25	90x90x50	110x110x3				
M36	80	76.1	130x130x25	100x100x60	120x120x3				
M42	95	101.6	160x160x30	120x120x70	140x140x3				
M48	100	101.6	180x180x35	130x130x70	150x150x3				
M52	115	101.6	250x250x35	130x130x90	150x150x3				
M56	120	101.6	250x250x35	140x140x100	160x160x3				
M64	135	101.6	300x300x40	150x150x120	180x180x3				

**QUALITY TO QC1, QC2 AND QC3 ON REQUEST**