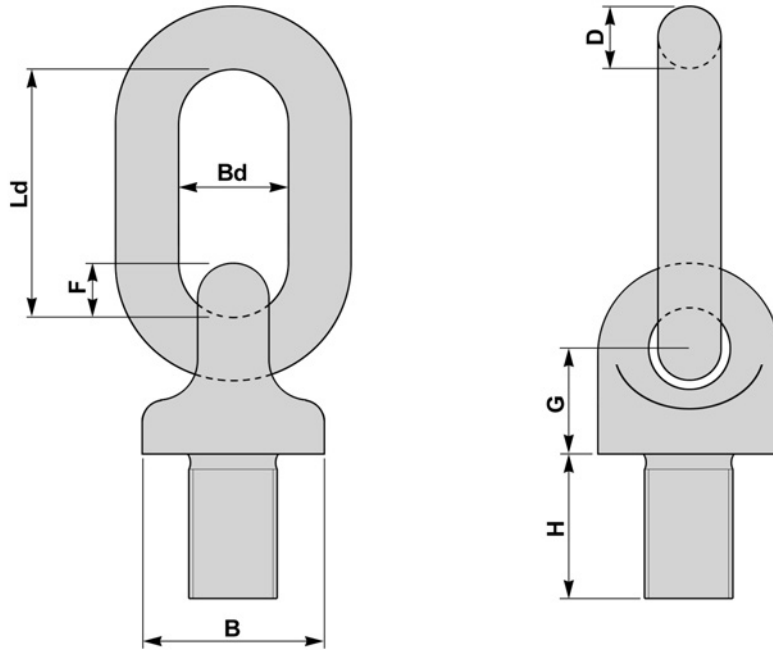


## EYEBOLTS WITH LINKS - METRIC

- PRODUCED FROM BS 4278 TABLE 2 FORGINGS



Thread Size	B	F	G	H	LINK			SWL	Weight Each
mm	mm	mm	mm	mm	D	Bd	Ld	tonnes	kgs
M8	39	12	20	27	13	24	53	0.10	0.40
M10	39	12	20	27	13	24	53	0.15	0.40
M12	39	12	20	27	13	24	53	0.20	0.40
M16	39	12	20	27	13	24	53	0.40	0.40
M20	39	12	20	27	13	24	53	1.00	0.50
M24	47	14	23	32	15	29	63	1.60	0.80
M30	60	18	30	41	19	37	80	2.50	1.50
M36	75	23	38	52	24	46	102	4.00	3.00
M42	94	29	47	65	30	58	126	4.50	5.50
M48	94	29	47	65	30	58	126	6.30	5.50

**MATERIAL**  
BS970 080A27 (EN5A)  
STAINLESS STEELS  
ALLOY STEELS  
B7

**FINISH**  
SELF COLOUR  
GALVANISED  
ELECTROPLATED  
CHEMICAL BLACK  
SHERARDISED

**FOR LOADING AT ANGLES  
AND TRUNNION LIFTING  
SEE PAGE 167**