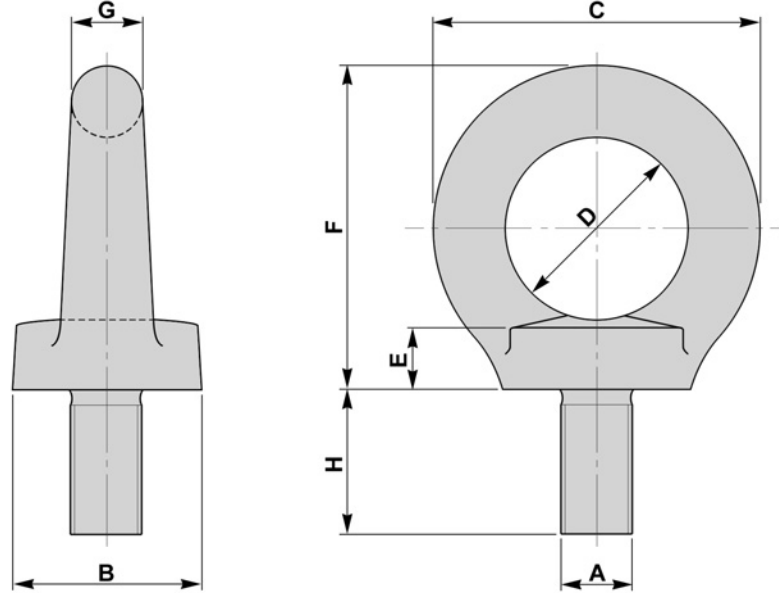


DIN 580 - EYEBOLTS

BFE 26



A	B	C	D	E	F	G	H	SWL	Weight Each
mm	mm	mm	mm	mm	mm	mm	mm	kgs	kgs
M6	17	28	16	6	31	6	13	70	0.06
M8	20	36	20	6	36	8	15	140	0.08
M10	25	45	25	8	45	10	18	230	0.11
M12	30	54	30	10	53	12	22	340	0.18
M14	35	63	35	12	62	14	28	490	0.29
M16	35	63	35	12	62	14	28	700	0.29
M20	40	72	40	14	71	16	30	1200	0.45
M22	45	81	45	16	80	18	35	1500	0.67
M24	50	90	50	16	90	20	38	1800	0.87
M27	50	90	50	18	90	20	38	2500	0.88
M30	65	108	60	18	109	24	45	3200	1.66
M33	65	108	60	22	109	24	45	4300	1.72
M36	75	126	70	22	128	28	55	4600	2.65
M39	75	126	70	26	128	28	55	6100	2.80
M42	85	144	80	30	147	32	65	7000	4.03
M45	85	144	80	30	147	32	65	8000	4.25
M48	100	166	90	35	168	36	70	8600	6.38
M52	100	166	90	35	168	36	70	9900	6.66
M56	110	184	100	38	187	42	80	11500	8.80
M64	120	206	110	42	208	48	90	16000	12.40

MATERIAL
 CARBON STEELS
 STAINLESS STEELS
 ALLOY STEELS
 B7, 4.6, 5.6, 8.8

FINISH
 SELF COLOUR
 GALVANISED
 ELECTROPLATED
 SHERARDISED
 PTFE COATING

**SWL SHOWN FOR
 VERTICAL LIFT**
**ITEMS SUPPLIED UNTESTED
 UNLESS REQUESTED**