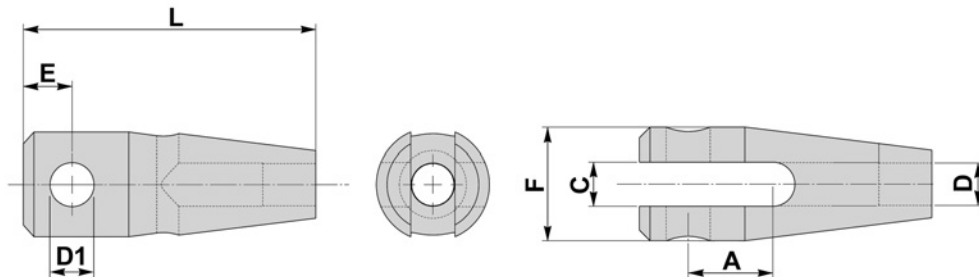
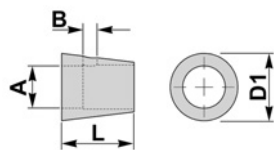


## CLEVIS TYPE 2 - MACHINED



| D          | D1 | C  | A  | E    | F   | L     | ADJ |
|------------|----|----|----|------|-----|-------|-----|
| Thread     | mm | mm | mm | mm   | mm  | mm    | mm  |
| M10 X 1.50 | 10 | 10 | 20 | 11.2 | 25  | 68.7  | 20  |
| M12 X 1.75 | 12 | 12 | 24 | 13.8 | 32  | 82.8  | 24  |
| M16 X 2.00 | 16 | 15 | 32 | 18.4 | 40  | 109.9 | 32  |
| M20 X 2.50 | 20 | 19 | 40 | 23.0 | 50  | 137.5 | 40  |
| M24 X 3.00 | 24 | 24 | 48 | 27.6 | 60  | 165.6 | 48  |
| M27 X 3.00 | 27 | 26 | 54 | 31.1 | 70  | 185.9 | 54  |
| M30 X 3.50 | 30 | 29 | 60 | 34.5 | 75  | 206.5 | 60  |
| M33 X 3.50 | 33 | 32 | 66 | 38.0 | 80  | 227.3 | 66  |
| M36 X 4.00 | 36 | 34 | 72 | 41.4 | 90  | 247.4 | 72  |
| M39 X 4.00 | 39 | 38 | 78 | 44.9 | 100 | 268.7 | 78  |

## TAPERED LOCK NUTS



| A          | B   | L    | D1 |
|------------|-----|------|----|
| Thread     | mm  | mm   | mm |
| M10 X 1.50 | 3.5 | 17.0 | 15 |
| M12 X 1.75 | 3.5 | 20.4 | 19 |
| M16 X 2.00 | 3.5 | 27.2 | 25 |
| M20 X 2.50 | 3.5 | 34.0 | 30 |
| M24 X 3.00 | 4.0 | 40.8 | 36 |
| M27 X 3.00 | 4.0 | 45.9 | 42 |
| M30 X 3.50 | 4.0 | 51.0 | 45 |
| M33 X 3.50 | 5.0 | 56.1 | 48 |
| M36 X 4.00 | 5.0 | 61.2 | 54 |
| M39 X 4.00 | 5.0 | 66.3 | 60 |



**MATERIAL**  
**CARBON STEELS**  
**STAINLESS STEELS**  
**ALLOY STEELS**  
**B7, 4.6, 5.6, 8.8**

**FINISH**  
**SELF COLOUR**  
**GALVANISED**  
**ELECTROPLATED**  
**SHERARDISED**  
**PTFE COATING**