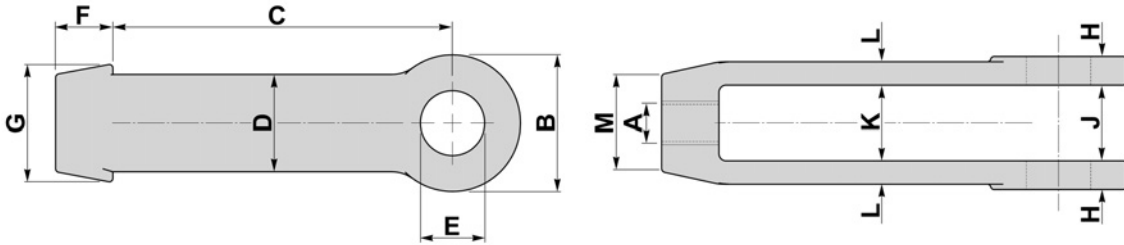


CLEVIS TYPE I - FORGED

BFF 22



Size	A		B	C	D	E	F	G	H*	J*	K	L
reference	mm	mm	mm	mm	mm	mm	mm	mm	mm	mm	mm	mm
2	M10	3/8	38	95	27	12	16	33	8	21	21	6.5
2	M12	1/2	38	95	27	14	16	33	8	21	21	6.5
2	M16	5/8	38	95	27	18	16	33	8	21	21	6.5
2.5	M20	3/4	63	103	32	22	28	45	9	31	31	9
2.5	M22	7/8	63	103	32	24	28	45	9	31	31	9
3	M24	1	76	129	38	26	32	56	12	41	41	12
3	M30	1. 1/8	76	129	38	32	32	56	12	41	41	12
3	M33	1. 1/4	76	129	38	36	32	56	12	41	41	12
3.5	M36	1. 1/2	89	152	44	39	41	65	20	48	56	12
4	M42	1. 5/8	102	152	50	45	44	79	22	56	66	12
5	M48	2	127	178	64	51	57	86	28	58	70	16
6	M56	2. 1/4	152	203	76	60	70	118	33	75	89	19
6	M64	2. 1/2	152	203	76	68	70	118	33	75	89	19
6	M72	2. 3/4	152	203	76	76	70	118	33	75	89	19
6	M76	3	152	203	76	76	70	118	33	75	89	19



MATERIAL

CARBON STEELS
STAINLESS STEELS
ALLOY STEELS
B7, 4.6, 5.6, 8.8

FINISH

SELF COLOUR
GALVANISED
ELECTROPLATED
SHERARDISED
PTFE COATING