

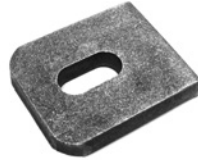
Cleats & Lugs



36/15
10mm Thick
25x12mm Slot
Base 60x30mm



36/16
10mm Thick
25x12mm Slot
Base 60x40mm



36/17
10mm Thick
25x12mm Slot
Base 60x50mm



36/18
5mm Thick
30x14mm Slot
Base 65x40mm



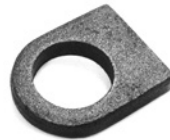
36/19
4mm Thick
25x13mm Slot
Base 50x30mm



36/20
4mm Thick
24x14mm Slot
Base 63x30mm



36/21
20mm Thick
27mm Hole
Base 64x51mm



36/22
9mm Thick
27mm Hole
Base 50x40mm



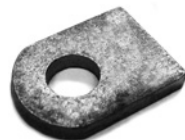
36/23
8mm Thick
13mm Hole
Base 43x30mm



36/38
11mm Holes
25x5x75mm



36/39
11mm Hole
52x24mm
5mm Thick



36/40
11mm Hole
35x24mm
5mm Thick



36/47
11mm Hole
27x41mm
5mm Thick

A/Z/CLIP/50X8X275/GV

50x8mm Thick Material

275mm Long

Single 25x13mm Slot

Galvanised Finish



36/32
25x13mm Slots
45mm Wide
50x50x6mm
Galvanised



36/34
Small Slot 25x12mm
Large Slot 40x12mm
30mm Wide
55x70x5mm
Galvanised



36/36
22x10mm Slots
50x50x6mm
Galvanised



36/37
20x10mm Slots
40mm Wide
45x45x6mm
Galvanised

GFW/BARB/WIRE/BACKET



Base
6x385x38mm
10mm Holes (2)
150mm Centers

Wire Holder
5x415x40mm
5x20mm Slots (3)
150mm Centers

Galvanised Finish