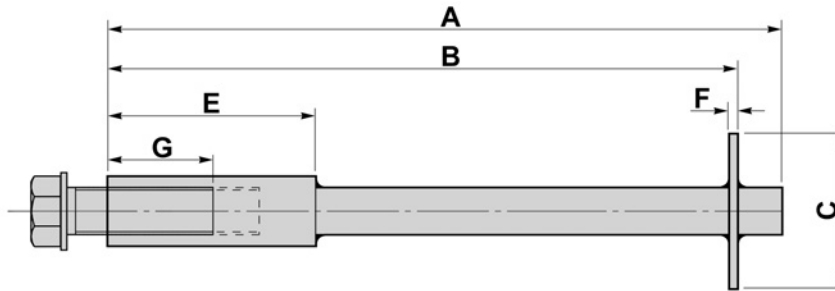


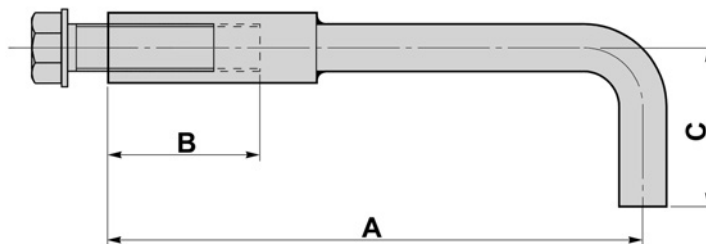
## CAST IN ANCHOR SOCKETS

### - CAST IN SOCKET WITH PLATE



TO SUIT	A	B	C	E	F	G
Bolt Size	mm	mm	mm SQ	mm	mm	mm
M20 x 50	198	180	60	50	8	22 - 28
M24 x 60	240	220	70	60	8	27 - 34
M30 x 80	300	278	80	75	10	33 - 42
M36 x 80	308	283	90	90	10	40 - 51
M42 x 80	397	370	100	105	12	57 - 59
M48 x 120	408	377	120	120	16	53 - 68
M56 x 140	420	389	130	140	16	62 - 79

### - CAST IN SOCKET (BENT)



TO SUIT	A	B	C
Bolt Size	mm	mm	mm
M20 x 50	210	50	60
M24 x 60	260	65	60
M30 x 80	280	65	80
M36 x 80	320	80	80
M42 x 80	345	90	90
M48 x 120	375	90	100
M56 x 140	420	110	110