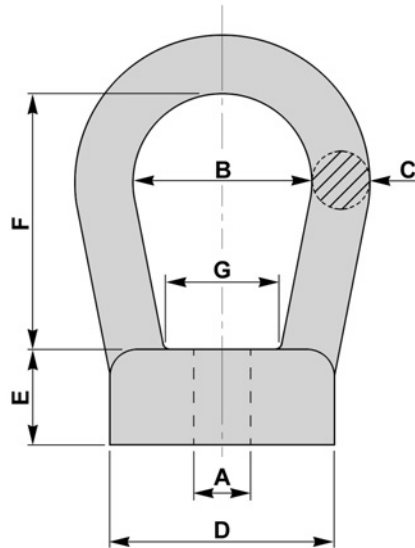


BS 3974 - BOW NUTS

- TO BS 3974 : 1974 PART I

BFE 23



A		B	C	D	E	F	G	SWL METRIC	SWL IMPERIAL
METRIC	IMPERIAL	mm	mm	mm	mm	mm	mm	kgs	kgs
M8	1/4	25	10	32	16	41	18	230	---
M10	3/8	25	10	32	16	41	18	360	250
M12	1/2	30	12	38	18	43	20	530	500
M16	5/8	30	12	38	18	43	20	1010	800
M18	3/4	40	14	45	25	63	25	1290	1200
M20	---	40	14	45	25	63	25	1580	---
M22	7/8	50	17	50	28	79	30	1930	1600
M24	1	50	17	50	28	79	30	2280	2200
M30	1. 1/8	75	26	70	38	82	46	3650	---
M33	1. 1/4	75	26	70	38	82	46	4490	3500
M36	1. 1/2	75	26	70	38	82	46	5340	4750
M42	1. 3/4	100	30	80	45	105	59	7400	---

MATERIAL
CARBON STEELS
STAINLESS STEELS
ALLOY STEELS
B7, 4.6, 5.6, 8.8

FINISH
SELF COLOUR
GALVANISED
ELECTROPLATED
SHERARDISED
PTFE COATING