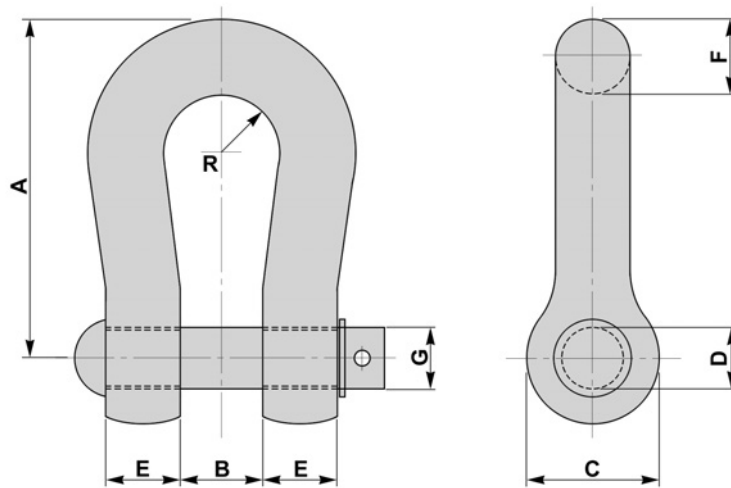


## BS 3288 - SHACKLES FOR OVERHEAD POWER LINES

- TO BS 3288 : 1990 PART 2

**BFL 14**



REF NUMBER	MIN FAILING LOAD	A	B	C	D	E	F	R	G DIA	PIN LENGTH	BOLT LENGTH
	kn	mm	mm	mm	mm	mm	mm	mm	mm	mm	mm
15/29	70	86	19	35	18	9.5	16	16	M16	60	70
28/29	125	95	21	54	22	13	19	19	M20	65	85
42/29	190	105	27	51	24	22	22	17	M22	95	115
42/103	190	105	28	51	27	22	22	17	SAG ADJUSTER PIN		
67/103	300	115	27	60	29	25	25	20	M27	105	120
15/129	70	109	22	44	18	19	19	19	M16	90	90
42/129	190	124	28	57	32	22	22	17	M30	100	120
28/108	125	104	38	45	24	20	20	19	M22	105	125

**AVAILABLE WITH PIN OR HEXAGON BOLT**

**MATERIAL**

**CARBON STEELS**

**FINISH**

**GALVANISED**

**NON STANDARDS  
AVAILABLE TO SUIT  
CUSTOMER REQUIREMENTS**