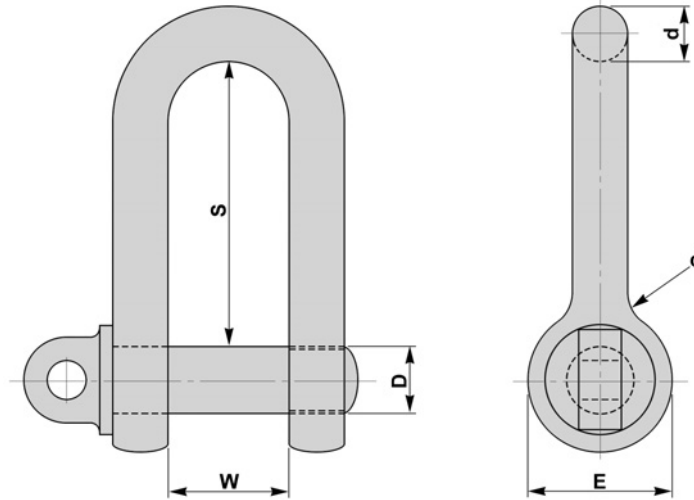


## BS 3032 - D SHACKLES - LARGE

**BFL 11**

- TO BS 3032 : 1958 TABLE 2



SWL		d	D	W	S	E	Weight Each
Tons	cwt	inches	inches	inches	inches	inches	kgs
---	5	1/4	3/8	1/2	1	3/4	0.1
---	10	3/8	1/2	3/4	1. 1/2	1	0.1
---	15	1/2	5/8	1. 1/8	2. 1/8	1. 1/4	0.3
1	10	5/8	3/4	1. 1/4	2. 1/2	1. 1/2	0.6
2	0	3/4	7/8	1. 1/2	2. 7/8	1. 3/4	0.9
3	0	7/8	1	1. 3/4	3. 1/4	2	1.6
3	15	1	1. 1/8	2	3. 3/4	2. 1/4	2.3
5	0	1. 1/8	1. 1/4	2. 1/8	4. 1/8	2. 1/2	3.3
6	0	1. 1/4	1. 3/8	2. 3/8	4. 1/2	2. 3/4	4.5
7	0	1. 3/8	1. 1/2	2. 5/8	5	3	6.1
9	10	1. 1/2	1. 3/4	2. 3/4	5. 3/8	3. 1/2	8.7
11	5	1. 5/8	1. 7/8	3	5. 3/4	3. 3/4	10.0
13	0	1. 3/4	2	3. 1/4	6. 1/8	4	12.5
14	5	1. 7/8	2. 1/8	3. 5/8	7	4. 1/4	15.3
16	5	2	2. 1/4	3. 7/8	7. 3/8	4. 1/2	18.5
18	0	2. 1/8	2. 3/8	4. 1/8	7. 3/4	4. 3/4	20.0
20	0	2. 1/4	2. 1/2	4. 1/4	8. 1/4	5	22.2
25	0	2. 1/2	2. 7/8	4. 3/4	9. 1/4	5. 3/4	35.8
30	0	2. 3/4	3. 1/8	5. 1/4	10. 1/4	6. 1/4	39.0
35	0	3	3. 3/8	5. 3/4	11	6. 3/4	62.7
40	0	3. 1/8	3. 1/2	5. 7/8	11. 1/2	7	70.8
50	0	3. 1/2	4	6. 3/4	13	8	99.4
65	0	4	4. 1/2	7. 1/2	14. 3/4	9	148.5
80	0	4. 1/2	5	8. 5/8	16. 1/2	10	211.6

**MATERIAL**

**BS 970 150M19 (EN14A)**  
**STAINLESS STEELS**  
**B7**

**FINISH**

**SELF COLOUR**  
**GALVANISED**  
**ELECTROPLATED**  
**SHERARDISED**  
**CHEMICAL BLACK**

**NON STANDARDS**  
**AVAILABLE TO SUIT**  
**CUSTOMER REQUIREMENTS**

BS 3032 - D SHACKLES - LARGE

All content is subject to copyright © 2022