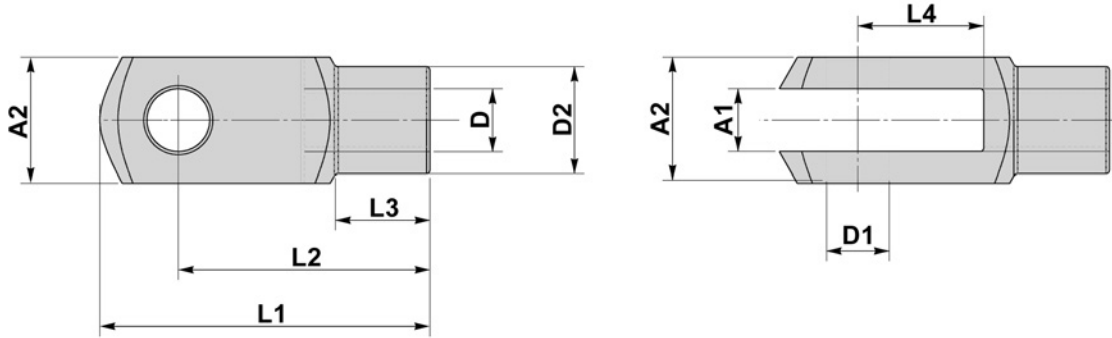


BASIC CLEVIS



| D | A1 | A2 | D1 | D2 | L1 | L2 | L3 | L4 |
|--------|----|----|----|----|-----|-----|------|----|
| Thread | mm | mm | mm | mm | mm | mm | mm | mm |
| M8 | 8 | 16 | 8 | 14 | 42 | 32 | 12 | 16 |
| M10 | 10 | 20 | 10 | 18 | 52 | 40 | 15 | 20 |
| M12 | 12 | 24 | 12 | 20 | 62 | 48 | 18 | 24 |
| M16 | 16 | 32 | 16 | 26 | 83 | 64 | 24 | 32 |
| M20 | 20 | 40 | 20 | 34 | 105 | 80 | 30 | 40 |
| M24 | 25 | 50 | 25 | 42 | 132 | 100 | 36 | 50 |
| M30 | 30 | 60 | 30 | 52 | 160 | 120 | 42 | 60 |
| M36 | 35 | 70 | 35 | 60 | 188 | 144 | 54 | 72 |
| M42 | 42 | 85 | 42 | 70 | 232 | 168 | 63.5 | 84 |

Available in both Right and Left Hand thread.

*Other sizes available to order.



TECHNICAL INFORMATION

M8 - M16: DIN 71 752 / DIN ISO 8140

**M18 - M42: Similar to DIN 71 752 / DIN ISO 8140
 and according to CETOP standard.**

MATERIAL

CARBON STEELS
STAINLESS STEELS
ALLOY STEELS
B7, 4.6, 5.6, 8.8

FINISH

SELF COLOUR
GALVANISED
ELECTROPLATED
SHERARDISED
PTFE COATING

