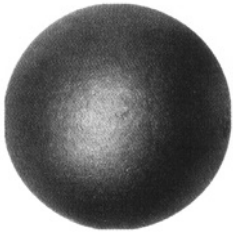


## Forged Balls & Spheres

### Solid Forged Spheres



22/1	12mm ø
22/2	16mm ø
22/3	20mm ø
22/4	25mm ø

22/5	30mm ø
22/6	35mm ø
22/7	40mm ø
22/8	50mm ø

22/9	60mm ø
22/10	70mm ø
22/11	75mm ø
22/12	80mm ø

22/13	100mm ø
22/14	115mm ø
22/15	125mm ø
22/16	150mm ø

### Hollow Spheres - 3mm Wall Thickness

22/100	30mm ø
22/101	40mm ø
22/102	50mm ø

22/103	60mm ø
22/104	70mm ø
22/105	75mm ø

22/106	80mm ø
22/107	100mm ø
22/108	125mm ø

22/109	130mm ø
22/110	150mm ø
22/111	200mm ø

22/112	300mm ø
--------	---------

### Hollow Hemispheres



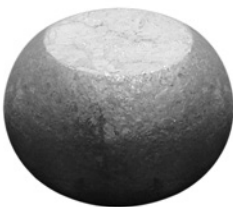
22/113	30mm ø
22/114	40mm ø
22/115	50mm ø
22/116	60mm ø

22/117	70mm ø
22/118	75mm ø
22/119	80mm ø
22/120	100mm ø

22/121	125mm ø
22/122	130mm ø
22/123	150mm ø
22/124	200mm ø

22/125	300mm ø
--------	---------

### Solid Squashed Spheres



22/63	35mm ø	22mm THK
22/64	40mm ø	26mm THK
22/65	45mm ø	28mm THK
22/66	55mm ø	35mm THK

### Drilled Solid Spheres



\*\*Hole drilled all the way through\*\*

22/79	30mm ø	13mm Hole
22/80	40mm ø	17mm Hole
22/81	50mm ø	21mm Hole
22/9*	60mm ø	17mm Hole

### Solid Hammered Spheres



22/67	20mm ø
22/68	25mm ø
22/69	30mm ø
22/70	40mm ø
22/71	50mm ø

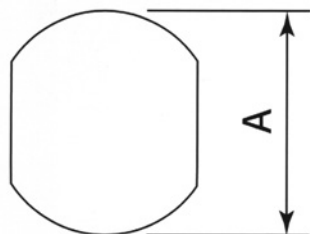
22/72	60mm ø
22/73	70mm ø
22/74	80mm ø
22/75	100mm ø

## ADDITIONAL INFORMATION

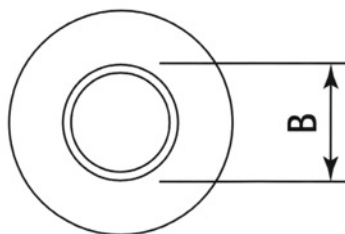
Ideal for furniture and quality work

tel. 01384 563356 email. sales@brooksforgings.co.uk www.brooksforgings.co.uk

Tubular and solid ball fittings are an integral part of handrail standards which form support posts for ball type industrial handrail systems. Brooks Forgings range of ball fittings can be supplied as individual units, thus offering the customer the opportunity of manufacturing their own handrail systems.



A= Ball Diameter

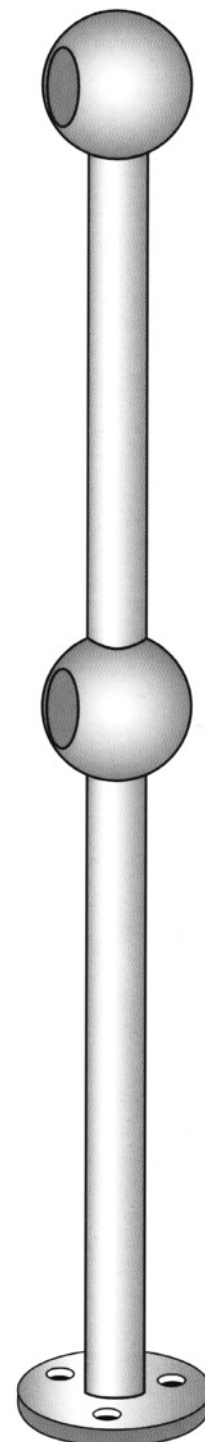


B= Hole Diameter

MILD STEEL SOLID BALLS (SPECIALS AVAILABLE)		
Code	A Diameter	B Diameter
24a/1	60mm	34mm
24a/2	70mm	42mm
24a/3	80mm	48mm

MILD STEEL TUBULAR BALLS		
Code	A Diameter	B Diameter
24a/4	52mm	27mm
24a/5	65mm	34mm
24a/6	75mm	34mm
24a/7	75mm	42mm
24a/8	75mm	48mm
24a/9	90mm	42mm
24a/10	90mm	48mm
24a/11	90mm	60mm

STAINLESS STEEL TUBULAR BALLS		
Code	A Diameter	B Diameter
24a/12	52mm	27mm
24a/13	65mm	34mm
24a/14	75mm	42mm
24a/15	90mm	48mm
24a/16	90mm	60mm



**ADDITIONAL INFORMATION**

Specials available, please call us to discuss your requirements

tel. 01384 563356 email. sales@brooksforgings.co.uk www.brooksforgings.co.uk